

# *Starters & Alternators*

*International Trucks Edition*



lotusfleettech.shop



# Range Overview

## Alternators



### 22-SI J-Type

Cross *	19020310
Voltage	12V
Amperage	150A



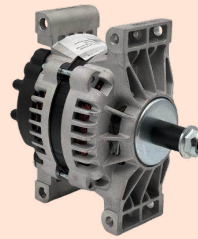
### 22-SI Pad-Type

Cross *	19020889
Voltage	12V
Amperage	150A



### 24-SI J-Type

Cross *	8600310
Voltage	12V
Amperage	160A



### 24-SI Pad-Type

Cross *	8600889
Voltage	12V
Amperage	160A



### 28-SI J-Type

Cross *	8600316
Voltage	12V
Amperage	180A



### 28-SI Pad-Type

Cross *	8600422
Voltage	12V
Amperage	160A



### 36-SI J-Type

Cross *	8700046
Voltage	12V
Amperage	170A



### 36-SI Pad-Type

Cross *	8600127
Voltage	12V
Amperage	170A



### 38-MT

Cross *	8200077
Voltage	12V
Teeth (Pitch)	10 (8/10)



### 39-MT

Cross *	8200308
Voltage	12V
Teeth (Pitch)	11 (6/8)



### 42-MT

Cross *	1990489
Voltage	12V
Teeth (Pitch)	11 (6/8)



### 50-MT

Cross *	10479328
Voltage	12V
Teeth (Pitch)	11 (6/8)

## Starters

**Strengths**



**Same Day Shipping**

Our promise to ship the same day, if ordered before 4 P.M.



**24x7 Technical Support**

We work round the clock to get your queries answered and parts delivered on time.



**Trial Phase (2-Weeks)**

Utilise our 2 week trial phase to fall in our love with our starters and alternators.



**Bulk Pricing**

You give us volume, and we promise a 20-26% cost reduction from our market price



**Private Labeling**

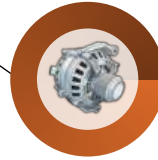
We help you build your brand, just inquire about our private labeling services



**Extended Credit Line**

A higher limit is what differentiates us from others

**COMPLETE Quality Solution**



**ISO/TS**  
16949:2001

**ISO**  
14001

**OHSAS**  
18001

**BENCH TESTING**  
(D&V ALT 198)

**EXTREME**  
CLIMATE TESTING

# Applications

Model	Year	Engine
1652	1993-2003	7.3 Liter V8 - 444 CID (International T444E)
1654	1993-2003	7.3 Liter V8 - 444 CID (International T444E)
	1995-1998	Liter - CID V8 (International NGD)
2300	1997-2000	14.0 Liter L6 - 855 CID (Cummins N14)
2375	1997-2000	14.0 Liter L6 - 855 CID (Cummins N14)
2575	1997-2000	10.0 Liter L6 - 610 CID (Cummins L10)
	1997-2000	10.8 Liter L6 - 661 CID (Cummins ISM)
3000-3900 Series	1999-2007	6.0 Liter V8 - 365 CID (International VT365)
	1997-2004	7.3 Liter V8 - 444 CID (International T444E)
4000-4900 Series	1997-1999	14.0 Liter L6 - 855 CID (Cummins N14)
	1997-1999	14.6 Liter L6 - 893 CID (Caterpillar 3406)
5000-5900 Series	1997-2003	8.7 Liter L6 - 530 CID (International DT530)
	1997-1999	10.0 Liter L6 - 610 CID (Cummins L10)
	1997-2003	10.3 Liter L6 - 629 CID (Caterpillar C10)
	1997-2000	10.8 Liter L6 - 661 CID (Cummins ISM)
	1997-2003	12.0 Liter L6 - 732 CID (Caterpillar C12)
	1997-2000	14.0 Liter L6 - 855 CID (Cummins N14)
	1997-1999	14.6 Liter L6 - 893 CID (Caterpillar 3406)
7100-7700 Series	2003-2004	10.3 Liter L6 - 629 CID (Caterpillar C10)
	2003-2004	12.0 Liter L6 - 732 CID (Caterpillar C12)
8100	1998-2002	10.8 Liter L6 - 661 CID (Cummins ISM)
8100-8600 Series	1997-2002	7.6 Liter L6 - 466 CID (International DT466)
	1997-1998	8.5 Liter L4 - 519 CID (DD Series 50)
	1997-2002	8.7 Liter L6 - 530 CID (International DT530)
	1997-2002	9.3 Liter L6 - 570 CID (International DT570)
	1997-2003	10.3 Liter L6 - 629 CID (Caterpillar C10)
	1997-1999	10.3 Liter L4 - 629 CID (Caterpillar 3176)
	1997-2000	10.8 Liter L6 - 661 CID (Cummins ISM)
	1997-1998	12.7 Liter L6 - 775 CID (DD Series 60)
	1997-2000	14.0 Liter L6 - 855 CID (Cummins N14)
	1997-1999	14.6 Liter L6 - 893 CID (Caterpillar 3406)
9100 SBA	1999	10.8 Liter L6 - 661 CID (Cummins ISM)
9100-9900 Series	1997-2003	10.3 Liter L6 - 629 CID (Caterpillar C10)
	1997-2000	10.3 Liter L4 - 629 CID (Caterpillar 3176)

Part # **LTALD13291**

### Cross References\*

19020310

90014270N

19020309

10459472

10459013

1012118060

8076N

1012118250

\*FOR REFERENCE PURPOSES ONLY

### Specifications

<b>Model</b>	22-SI
<b>Mount</b>	J-Type
<b>Performance Output</b>	12V; 150A
<b>Rotation</b>	Clockwise
<b>Ground Polarity</b>	Negative



### Application Inquiries

\*Call **(630) 202-4660** or write to **info@lotusautomotiveinc.com** for any application queries



# Applications

Model	Year	Engine
9100-9900 Series	1993-2003	7.3 Liter V8 - 444 CID (International T444E)
	1993-2003	7.3 Liter V8 - 444 CID (International T444E)
	1995-1998	Liter - CID V8 (International NGD)
	1997-2000	14.0 Liter L6 - 855 CID (Cummins N14)
	1997-2000	14.0 Liter L6 - 855 CID (Cummins N14)
	1997-2000	10.0 Liter L6 - 610 CID (Cummins L10)
9100i SBA	1997-2000	10.8 Liter L6 - 661 CID (Cummins ISM)
9200 SBA	1999-2007	6.0 Liter V8 - 365 CID (International VT365)
9200i SBA	1997-2004	7.3 Liter V8 - 444 CID (International T444E)
9400	2008-2010	763 CID
9400i SBA	2000	11.1 Liter L6 - 677 CID
9800 SBA	2001-2003	12.7 Liter L6 - 774 CID
9900 SFA	2004-2011	10.8 Liter L6 - 661 CID
9900i SFA	2000	1.1 Liter L6 - 677 CID

## Part # **LTALD13291**

### Cross References\*

**19020310**

**1012118060**

**ALT1004**

**90014074**

**10459189**

**MAL1458**

**REA022J**

\*FOR REFERENCE PURPOSES ONLY

### Specifications

<b>Model</b>	22-SI
<b>Mount</b>	J-Type
<b>Performance Output</b>	12V; 150A
<b>Rotation</b>	Clockwise
<b>Ground Polarity</b>	Negative



### Application Inquiries

\*Call **(630) 202-4660** or write to **info@lotusautomotiveinc.com** for any application queries



# Applications

Model	Year	Engine
4300	2003-2007	7.6 Liter L6 - 466 CID (International 4300)
4300LP	2003-2007	7.6 Liter L6 - 466 CID (International 4300)
4400	2003-2007	7.6 Liter L6 - 466 CID (International 4300)
4400LP	2003-2007	7.6 Liter L6 - 466 CID (International 4300)
7300	2003-2007	7.6 Liter L6 - 466 CID (International 4300)
7400	2003-2006	7.6 Liter L6 - 466 CID (International 4300)

## Part # **LTALD988291**

### Cross References\*

- 19020889**
- A90220145PM**
- 19020888**
- 1012118390**
- 90014393N**
- MAL1459**
- 8362N**
- REA022P**

\*FOR REFERENCE PURPOSES ONLY

### Specifications

<b>Model</b>	22-SI
<b>Mount</b>	Pad-Type
<b>Performance Output</b>	12V; 150A
<b>Rotation</b>	Clockwise
<b>Ground Polarity</b>	Negative

 **Application Inquiries**

\*Call **(630) 202-4660** or write to **info@lotusautomotiveinc.com** for any application queries



Part # **LTALD1368**

Cross References\*

**8600310**    **A9-024-0160**

**8600126**    **8600313**

**DR8600310**    **21328600310**

**8718N**    **10459555**

\* FOR REFERENCE PURPOSES ONLY

Specifications

<b>Model</b>	24-SI
<b>Mount</b>	J-Type
<b>Performance Output</b>	12V; 160A
<b>Rotation</b>	Clockwise
<b>Ground Polarity</b>	Negative

 **Application Inquiries**

\*Call **(630) 202-4660** or write to **info@lotusautomotiveinc.com** for any application queries



***Applications***

<b>Model</b>	<b>Year</b>	<b>Engine</b>
1452SC	1987-1988	6.9 Liter V8 - 6884 CC, 420 CID
	1988-1992	7.3 Liter V8 - 7277 CC, 444 CID
1652SC	1990-1994	5.9 Liter L6 - 5900 CC, 360 CID
	2004-2012	6.0 Liter V8 - 5982 CC, 365 CID
2155	1994-2005	7.3 Liter V8 - 7277 CC, 444 CID
	1980-1989	7.6 Liter L6 - 466 CID
2275	1980-1989	14.0 Liter L6 - 14013 CC, 855 CID
	2276S	1983-1989
2375S	1988-1989	7.6 Liter L6 - 466 CID
	1983-1989	10.0 Liter L6 - 10014 CC, 611 CID
2554	1979-2002	7.6 Liter L6 - 466 CID
	1995-2002	8.7 Liter L6 - 8687 CC, 530 CID
2574	1999-2000	14.0 Liter L6 - 14013 CC, 855 CID
	2001-2003	7.6 Liter L6 - 466 CID
2575	1994-2003	8.7 Liter L6 - 8687 CC, 530 CID
	1984-1999	10.0 Liter L6 - 10014 CC, 611 CID
2654	2000-2003	10.3 Liter L6 - 10309 CC, 629 CID
	1994-2003	10.8 Liter L6 - 10834 CC, 661 CID
2674	1980-2002	14.0 Liter L6 - 14013 CC, 855 CID
	1984-1989	10.0 Liter L6 - 10014 CC, 611 CID
2675	1980-1989	14.0 Liter L6 - 14013 CC, 855 CID
	1989-2002	7.6 Liter L6 - 466 CID
2675	2000-2002	8.7 Liter L6 - 8687 CC, 530 CID
	2000	10.8 Liter L6 - 10834 CC, 661 CID
2675	1999-2000	14.0 Liter L6 - 14013 CC, 855 CID
	2001-2003	7.6 Liter L6 - 466 CID
2675	2000-2003	8.7 Liter L6 - 8687 CC, 530 CID
	1984-1999	10.0 Liter L6 - 10014 CC, 611 CID
2675	1998-2003	10.3 Liter L6 - 10309 CC, 629 CID
	1994-2003	10.8 Liter L6 - 10834 CC, 661 CID
2675	1980-2002	14.0 Liter L6 - 14013 CC, 855 CID
	1987-1989	10.0 Liter L6 - 10014 CC, 611 CID
2675	1987-1989	14.0 Liter L6 - 14013 CC, 855 CID

# Applications

Model	Year	Engine
3000	1997-2000	7.3 Liter V8 - 444 CID
	2000-2002	7.6 Liter L6 - 466 CID
	2002	8.5 Liter L4 - 8506 CC, 519 CID
3000IC	2000-2002	7.3 Liter V8 - 444 CID
	2000-2002	7.6 Liter L6 - 466 CID
3000RE	1996-2000	7.3 Liter V8 - 444 CID
	2005	7.6 Liter L6 - 466 CID
	2002	8.7 Liter L6 - 530 CID
3200	2002-2011	6.0 Liter V8 - 365 CID
	2002-2003	7.6 Liter L6 - 466 CID
	2003	8.7 Liter L6 - 530 CID
3300	2005-2011	6.0 Liter V8 - 365 CID
3400	1996-2002	7.3 Liter V8 - 444 CID
3600	1994-2002	7.3 Liter V8 - 444 CID
	1994-2001	7.6 Liter L6 - 466 CID
3800	1994-2004	7.3 Liter V8 - 444 CID
	1990-2004	7.6 Liter L6 - 466 CID
3900FC	1991-1996	7.6 Liter L6 - 466 CID
4200	2002-2003	6.0 Liter V8 - 5982 CC, 365 CID
4200LP	2003	6.0 Liter V8 - 365 CID
4300	2002-2003	7.6 Liter L6 - 466 CID
4300LP	2002-2003	7.6 Liter L6 - 466 CID
4400	2002-2003	7.6 Liter L6 - 466 CID
	2002-2006	8.7 Liter L6 - 8687 CC, 530 CID
	2004-2008	9.3 Liter L6 - 570 CID
4400LP	2002-2003	7.6 Liter L6 - 466 CID
	2002-2005	8.7 Liter L6 - 530 CID
	2005-2007	9.3 Liter L6 - 570 CID
4600	1991-1995	7.3 Liter V8 - 7277 CC, 444 CID
4600LP	1994	7.3 Liter V8 - 444 CID
4700	1990-1994	5.9 Liter L6 - 5900 CC, 360 CID
	1994-2002	7.3 Liter V8 - 7277 CC, 444 CID
	1990-2003	7.6 Liter L6 - 466 CID
	1996-2003	8.7 Liter L6 - 8687 CC, 530 CID

Part # **LTALD1368**

Cross References\*

**8600310**

**A9-024-0160**

**8600126**

**8600313**

**DR8600310**

**21328600310**

**8718N**

**10459555**

\*FOR REFERENCE PURPOSES ONLY

Specifications

<b>Model</b>	24-SI
<b>Mount</b>	J-Type
<b>Performance Output</b>	12V; 160A
<b>Rotation</b>	Clockwise
<b>Ground Polarity</b>	Negative



**Application Inquiries**

\*Call **(630) 202-4660** or write to **info@lotusautomotiveinc.com** for any application queries



Part # **LTALD1368**

Cross References\*

**8600310**    **A9-024-0160**

**8600126**    **8600313**

**DR8600310**    **21328600310**

**8718N**    **10459555**

\* FOR REFERENCE PURPOSES ONLY

Specifications

<b>Model</b>	24-SI
<b>Mount</b>	J-Type
<b>Performance Output</b>	12V; 160A
<b>Rotation</b>	Clockwise
<b>Ground Polarity</b>	Negative



\*Call **(630) 202-4660** or write to **info@lotusautomotiveinc.com** for any application queries



***Applications***

Model	Year	Engine
4700LP	1990-1992	5.9 Liter L6 - 360 CID
	1994-2002	7.3 Liter V8 - 444 CID
	1994-2002	7.6 Liter L6 - 466 CID
	1997-2002	8.7 Liter L6 - 530 CID
4700LPX	1995-2002	7.3 Liter V8 - 444 CID
4800	1990-1994	5.9 Liter L6 - 5900 CC, 360 CID
	1995-1997	7.3 Liter V8 - 7277 CC, 444 CID
	1990-2003	7.6 Liter L6 - 466 CID
4900	1996-2003	8.7 Liter L6 - 8687 CC, 530 CID
	1992-1993	5.9 Liter L6 - 5900 CC, 360 CID
	1995-1997	7.3 Liter V8 - 7277 CC, 444 CID
5000	1990-2003	7.6 Liter L6 - 466 CID
	1994-2004	8.7 Liter L6 - 8687 CC, 530 CID
	1995-2000	8.7 Liter L6 - 8687 CC, 530 CID
	1990-1998	10.0 Liter L6 - 10014 CC, 611 CID
5070	1998-2000	10.3 Liter L6 - 10309 CC, 629 CID
	1994-1997	10.8 Liter L6 - 10834 CC, 661 CID
	1990-1999	14.0 Liter L6 - 14013 CC, 855 CID
	1999-1999	14.6 Liter L6 - 14636 CC, 893 CID
5500i	1995-2000	8.7 Liter L6 - 8687 CC, 530 CID
	1985-1998	10.0 Liter L6 - 10014 CC, 611 CID
	1999-2000	10.3 Liter L6 - 10309 CC, 629 CID
	1995-2000	10.8 Liter L6 - 10834 CC, 661 CID
5600i	1984-2000	14.0 Liter L6 - 14013 CC, 855 CID
	1993-1999	14.6 Liter L6 - 14636 CC, 893 CID
	2001-2002	7.6 Liter L6 - 466 CID
	2000-2003	8.7 Liter L6 - 8687 CC, 530 CID
5600i	2000-2003	10.3 Liter L6 - 10309 CC, 629 CID
	2000-2003	10.8 Liter L6 - 10834 CC, 661 CID
	2000-2002	14.0 Liter L6 - 14013 CC, 855 CID
	2000-2003	14.6 Liter L6 - 14636 CC, 893 CID
5600i	2001-2002	7.6 Liter L6 - 466 CID
	2000-2003	8.7 Liter L6 - 8687 CC, 530 CID
	2001-2004	10.3 Liter L6 - 10309 CC, 629 CID

## Applications

Model	Year	Engine
5600i	2000-2003	10.8 Liter L6 - 10834 CC, 661 CID
	2000-2002	14.0 Liter L6 - 14013 CC, 855 CID
	2000-2003	14.6 Liter L6 - 14636 CC, 893 CID
	2000-2003	732 CID
5900i	2000-2003	10.8 Liter L6 - 10834 CC, 661 CID
	2000-2002	14.0 Liter L6 - 14013 CC, 855 CID
7100	1990-1995	7.6 Liter L6 - 466 CID
	1994-1995	8.7 Liter L6 - 8687 CC, 530 CID
7300	2002-2016	7.6 Liter L6 - 466 CID
7400	2002-2003	7.6 Liter L6 - 466 CID
	2002-2003	8.7 Liter L6 - 8687 CC, 530 CID
7500	2002	7.6 Liter L6 - 466 CID
	2002-2003	8.7 Liter L6 - 8687 CC, 530 CID
7600	2003	10.8 Liter L6 - 10834 CC, 661 CID
8100	1990-2003	7.6 Liter L6 - 466 CID
	1994-1998	8.5 Liter L4 - 8506 CC, 519 CID
	1994-2003	8.7 Liter L6 - 8687 CC, 530 CID
	1990-1999	10.0 Liter L6 - 10014 CC, 611 CID
	1998-2003	10.3 Liter L6 - 10309 CC, 629 CID
	1994-2003	10.8 Liter L6 - 10834 CC, 661 CID
	1990-1996	11.1 Liter L6 - 11096 CC, 677 CID
	1990-1996	12.7 Liter L6 - 12686 CC, 774 CID
	1990-1999	14.0 Liter L6 - 14013 CC, 855 CID
8200	1996-1997	7.6 Liter L6 - 466 CID
	1997	8.5 Liter L4 - 8506 CC, 519 CID
	1996-1997	8.7 Liter L6 - 8687 CC, 530 CID
	1990-1997	10.0 Liter L6 - 10014 CC, 611 CID
	1994-1997	10.8 Liter L6 - 10834 CC, 661 CID
	1990-1997	11.1 Liter L6 - 11096 CC, 677 CID
	1990-1996	12.7 Liter L6 - 12686 CC, 774 CID
	1990-1997	14.0 Liter L6 - 14013 CC, 855 CID
8300	1988-1994	10.0 Liter L6 - 10014 CC, 611 CID
	1990-1994	11.1 Liter L6 - 11096 CC, 677 CID
	1990-1994	12.7 Liter L6 - 12686 CC, 774 CID

Part # **LTALD1368**

### Cross References\*

- 8600310**
- A9-024-0160**
- 8600126**
- 8600313**
- DR8600310**
- 21328600310**
- 8718N**
- 10459555**

\*FOR REFERENCE PURPOSES ONLY

### Specifications

<b>Model</b>	24-SI
<b>Mount</b>	J-Type
<b>Performance Output</b>	12V; 160A
<b>Rotation</b>	Clockwise
<b>Ground Polarity</b>	Negative

**Application Inquiries**

\*Call **(630) 202-4660** or write to **info@lotusautomotiveinc.com** for any application queries



## Part # **LTALD1368**

### Cross References\*

**8600310**    **A9-024-0160**

**8600126**    **8600313**

**DR8600310**    **21328600310**

**8718N**    **10459555**

\* FOR REFERENCE PURPOSES ONLY

### Specifications

<b>Model</b>	24-SI
<b>Mount</b>	J-Type
<b>Performance Output</b>	12V; 160A
<b>Rotation</b>	Clockwise
<b>Ground Polarity</b>	Negative



### Application Inquiries

\*Call **(630) 202-4660** or write to **info@lotusautomotiveinc.com** for any application queries



## Applications

Model	Year	Engine
8300	1988-1994	14.0 Liter L6 - 14013 CC, 855 CID
8500	2002-2003	8.7 Liter L6 - 8687 CC, 530 CID
8600 SBA	2003	10.3 Liter L6 - 10309 CC, 629 CID
	2003	10.8 Liter L6 - 10834 CC, 661 CID
	2003	732 CID
9100SBA	1998	10.8 Liter L6 - 10834 CC, 661 CID
	1998-1999	11.1 Liter L6 - 11096 CC, 677 CID
	1998-1999	14.0 Liter L6 - 14013 CC, 855 CID
9100i SBA	2001-2003	10.8 Liter L6 - 10834 CC, 661 CID
	2000-2002	14.0 Liter L6 - 14013 CC, 855 CID
9200 SBA	1993-1994	10.0 Liter L6 - 10014 CC, 611 CID
	1998-2000	10.3 Liter L6 - 10309 CC, 629 CID
	1994-2000	10.8 Liter L6 - 10834 CC, 661 CID
	1994-2000	11.1 Liter L6 - 11096 CC, 677 CID
	1994-2000	12.7 Liter L6 - 12686 CC, 774 CID
	1994-2000	14.0 Liter L6 - 14013 CC, 855 CID
	1996	14.6 Liter L6 - 14636 CC, 893 CID
	1993-1997	629 CID
	1997-2000	732 CID
	1999	915 CID
9200i SBA	2000-2003	10.3 Liter L6 - 10309 CC, 629 CID
	2001-2003	10.8 Liter L6 - 10834 CC, 661 CID
	2000-2002	14.0 Liter L6 - 14013 CC, 855 CID
	2004	14.6 Liter L6 - 14640 CC, 893 CID
	2002-2003	14.6 Liter L6 - 14636 CC, 893 CID
	2003	14.9 Liter L6 - 912 CID
	2000-2003	732 CID
	2000-2002	915 CID
9300	1990-1998	7.6 Liter L6 - 466 CID
	1988-1988	9.0 Liter V6 - 9047 CC, 552 CID
	1988-1994	10.0 Liter L6 - 10014 CC, 611 CID
	1994-1999	10.8 Liter L6 - 10834 CC, 661 CID
	1992-1998	11.1 Liter L6 - 11096 CC, 677 CID
	1988	12.1 Liter V8 - 12063 CC, 736 CID

## Applications

Model	Year	Engine
9300	1992-1999	12.7 Liter L6 - 12686 CC, 774 CID
	1988-1999	14.0 Liter L6 - 14013 CC, 855 CID
	1988-2000	14.6 Liter L6 - 14636 CC, 893 CID
9370	1985-1987	9.0 Liter V6 - 9047 CC, 552 CID
	1986-1987	10.0 Liter L6 - 10014 CC, 611 CID
	1985	12.1 Liter V8 - 12063 CC, 736 CID
	1985-1987	14.0 Liter L6 - 14013 CC, 855 CID
9400	1986-1987	14.6 Liter L6 - 14636 CC, 893 CID
	1990-1994	10.0 Liter L6 - 10014 CC, 611 CID
9400i SBA	1995-2000	10.8 Liter L6 - 10834 CC, 661 CID
	1992-2000	11.1 Liter L6 - 11096 CC, 677 CID
	1992-2000	12.7 Liter L6 - 12686 CC, 774 CID
	1990-2000	14.0 Liter L6 - 14013 CC, 855 CID
	1990-2000	14.6 Liter L6 - 14636 CC, 893 CID
	2000	8.5 Liter L4 - 8506 CC, 519 CID
	2001-2003	10.8 Liter L6 - 10834 CC, 661 CID
9600	2000	11.1 Liter L6 - 11096 CC, 677 CID
	2000-2003	12.7 Liter L6 - 12686 CC, 774 CID
	2000-2002	14.0 Liter L6 - 14013 CC, 855 CID
	2000-2003	14.6 Liter L6 - 14636 CC, 893 CID
	2003	14.9 Liter L6 - 912 CID
	2000-2003	732 CID
	2000-2002	915 CID
	9700	1989-1994
1994-1996		10.8 Liter L6 - 10834 CC, 661 CID
1992-1996		11.1 Liter L6 - 11096 CC, 677 CID
1995-1996		12.7 Liter L6 - 12686 CC, 774 CID
1989-1996		14.0 Liter L6 - 14013 CC, 855 CID
9800SBA		1989-1994
	1994-1996	10.8 Liter L6 - 10834 CC, 661 CID
	1992-1996	11.1 Liter L6 - 11096 CC, 677 CID
	1995-1996	12.7 Liter L6 - 12686 CC, 774 CID
	1989-1996	14.0 Liter L6 - 14013 CC, 855 CID
9800SBA	1996-1999	10.8 Liter L6 - 10834 CC, 661 CID

Part # **LTALD1368**

### Cross References\*

- 8600310**    **A9-024-0160**
- 8600126**    **8600313**
- DR8600310**    **21328600310**
- 8718N**    **10459555**

\*FOR REFERENCE PURPOSES ONLY

### Specifications

<b>Model</b>	24-SI
<b>Mount</b>	J-Type
<b>Performance Output</b>	12V; 160A
<b>Rotation</b>	Clockwise
<b>Ground Polarity</b>	Negative

**Application Inquiries**

\*Call **(630) 202-4660** or write to **info@lotusautomotiveinc.com** for any application queries



# Applications

Model	Year	Engine
9800 SBA	1996-1999	11.1 Liter L6 - 11096 CC, 677 CID
	1996-1996	12.7 Liter L6 - 12686 CC, 774 CID
	1996-1999	14.0 Liter L6 - 14013 CC, 855 CID
9900	1999-2000	10.8 Liter L6 - 10834 CC, 661 CID
	1999-2000	12.7 Liter L6 - 12686 CC, 774 CID
	1999-2000	14.0 Liter L6 - 14013 CC, 855 CID
9900 SFA	1999	11.1 Liter L6 - 11096 CC, 677 CID
	1999	14.0 Liter L6 - 14013 CC, 855 CID
	1999-2000	14.6 Liter L6 - 14636 CC, 893 CID
9900i	2000-2003	10.8 Liter L6 - 10834 CC, 661 CID
	2000-2002	14.0 Liter L6 - 14013 CC, 855 CID
	2000-2003	14.6 Liter L6 - 14636 CC, 893 CID
	2013	15.2 Liter L6 - 928 CID
	2000-2004	732 CID
9900i SFA	2001-2003	10.8 Liter L6 - 10834 CC, 661 CID
	2000-2002	14.0 Liter L6 - 14013 CC, 855 CID
9900ix	2000-2002	14.0 Liter L6 - 14013 CC, 855 CID
	2000-2003	14.6 Liter L6 - 14636 CC, 893 CID
	2000	732 CID
	2000-2009	915 CID
9900ix SFA	2001-2002	10.8 Liter L6 - 10834 CC, 661 CID
	2001-2002	12.7 Liter L6 - 12686 CC, 774 CID
	2001-2002	14.0 Liter L6 - 14013 CC, 855 CID
	2003	14.6 Liter L6 - 14636 CC, 893 CID

Part # **LTALD1368**

### Cross References\*

8600310

A9-024-0160

8600126

8600313

DR8600310

21328600310

8718N

10459555

\*FOR REFERENCE PURPOSES ONLY

### Specifications

Model	24-SI
Mount	J-Type
Performance Output	12V; 160A
Rotation	Clockwise
Ground Polarity	Negative



### Application Inquiries

\*Call **(630) 202-4660** or write to **info@lotusautomotiveinc.com** for any application queries



Part # **LTALD98868**

### Cross References\*

**8600889**

**A9-024-0160PM**

**8600314**

**8600315**

**DR8600889**

**21328600889**

**8719N**

**3700150C92**

\* FOR REFERENCE PURPOSES ONLY

### Specifications

<b>Model</b>	24-SI
<b>Mount</b>	Pad-Type
<b>Performance Output</b>	12V; 160A
<b>Rotation</b>	Clockwise
<b>Ground Polarity</b>	Negative



### Application Inquiries

\*Call **(630) 202-4660** or write to [info@lotusautomotiveinc.com](mailto:info@lotusautomotiveinc.com) for any application queries

## Applications

Model	Year	Engine
3200	2008-2011	6.0 Liter V8 - 365 CID
	2008-2011	6.4 Liter V8 - 389 CID
	2009-2011	7.6 Liter L6 - 466 CID
3300	2008-2011	6.0 Liter V8 - 365 CID
4100	2006-2012	6.0 Liter V8 - 365 CID
4100 SBA	2006-2008	6.0 Liter V8 - 365 CID
4200	2004-2010	6.0 Liter V8 - 365 CID
4200LP	2004-2008	6.0 Liter V8 - 365 CID
4300	2004-2013	7.6 Liter L6 - 466 CID
4300LP	2004-2012	7.6 Liter L6 - 466 CID
4400	2004-2016	7.6 Liter L6 - 466 CID
	2007-2016	9.3 Liter L6 - 570 CID
4400LP	2004-2015	7.6 Liter L6 - 466 CID
4700	2004	7.6 Liter L6 - 466 CID
4900	2004-2005	7.6 Liter L6 - 466 CID
5500i	2004-2005	8.7 Liter L6 - 530 CID
	2012-2014	10.5 Liter L6 - 641 CID
	2004-2012	10.8 Liter L6 - 661 CID
5900i	2003	7.6 Liter L6 - 466 CID
	2004-2005	8.7 Liter L6 - 530 CID
	2012-2014	10.5 Liter L6 - 641 CID
	2004-2012	10.8 Liter L6 - 661 CID
	2004	14.6 Liter L6 - 893 CID
	2005-2008	15.2 Liter L6 - 928 CID
	2006-2007	677 CID
	2004	732 CID
	2005-2009	763 CID
7300	2004-2016	7.6 Liter L6 - 466 CID
	2004-2019	8.7 Liter L6 - 530 CID
	2007-2014	9.3 Liter L6 - 570 CID
7500	2008-2011	7.6 Liter L6 - 466 CID
	2003-2005	8.7 Liter L6 - 530 CID
	2007-2016	9.3 Liter L6 - 570 CID
8500	2004-2005	8.7 Liter L6 - 530 CID



## Applications

Model	Year	Engine
8500 Tran Star	2008-2011	10.8 Liter L6 - 661 CID
8600 SBA	2004	10.3 Liter L6 - 629 CID
	2004-2007	10.8 Liter L6 - 661 CID
	2005-2007	677 CID
	2004-2005	732 CID
	2004-200	763 CID
8600 TranStar	2009-2014	10.5 Liter L6 - 641 CID
	2008-2011	10.8 Liter L6 - 661 CID
	2008-2014	12.4 Liter L6 - 758 CID
	2008-2010	763 CID
9100i SBA	2000	11.1 Liter L6 - 677 CID
	2001-2003	12.7 Liter L6 - 774 CID
9200i SBA	2004-2011	10.8 Liter L6 - 661 CID
	2000	1.1 Liter L6 - 677 CID
	2000-2003	12.7 Liter L6 - 774 CID
	2004	732 CID
	2004-2011	763 CID
	2004	915 CID
9400i SBA	2004-2011	10.8 Liter L6 - 661 CID
	2004-2009	14.6 Liter L6 - 893 CID
	2004-2007	15.2 Liter L6 - 928 CID
	2004	732 CID
	2004-2007	763 CID
9900i	2000-2003	12.7 Liter L6 - 774 CID
	2004	14.6 Liter L6 - 893 CID
	2004-2010	15.2 Liter L6 - 928 CID
	2004-2009	763 CID
9900i SFA	2000-2002	11.1 Liter L6 - 677 CID
	2001-2003	12.7 Liter L6 - 774 CID
9900ix	2000-2002	12.7 Liter L6 - 774 CID
	2004	14.6 Liter L6 - 893 CID
	2004-2008	15.2 Liter L6 - 928 CID
	2006	763 CID
CF500	2005-2009	4.5 Liter V6 - 275 CID

Part # **LTALD98868**

### Cross References\*

**8600889**

**A9-024-0160PM**

**8600314**

**8600315**

**DR8600889**

**21328600889**

**8719N**

**3700150C92**

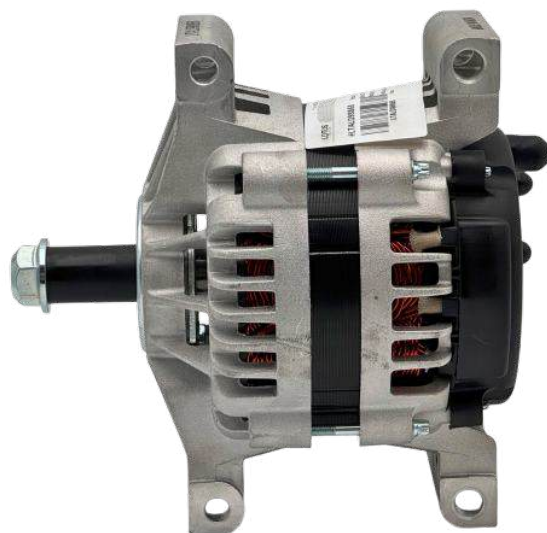
\*FOR REFERENCE PURPOSES ONLY

### Specifications

<b>Model</b>	24-SI
<b>Mount</b>	Pad-Type
<b>Performance Output</b>	12V; 160A
<b>Rotation</b>	Clockwise
<b>Ground Polarity</b>	Negative



\*Call **(630) 202-4660** or write to **info@lotusautomotiveinc.com** for any application queries



Part # **LTALD98868**

Cross References\*

**8600889**

**A9-024-0160PM**

**8600314**

**8600315**

**DR8600889**

**21328600889**

**8719N**

**3700150C92**

\* FOR REFERENCE PURPOSES ONLY

Specifications

<b>Model</b>	24-SI
<b>Mount</b>	Pad-Type
<b>Performance Output</b>	12V; 160A
<b>Rotation</b>	Clockwise
<b>Ground Polarity</b>	Negative



**Application Inquiries**

\*Call **(630) 202-4660** or write to **info@lotusautomotiveinc.com** for any application queries

**Applications**

Model	Year	Engine
CF600	2005-2009	4.5 Liter V6 - 275 CID
CXT	2006-2008	6.0 Liter V8 - 365 CID
	2005-2008	7.6 Liter L6 - 466 CID
Durastar	2013	7.6 Liter L6 - 466 CID
Lonestar	2010-2011	10.8 Liter L6 - 661 CID
	2010	15.2 Liter L6 - 928 CID
	2009-2011	915 CID
MXT	2007-2009	6.0 Liter V8 - 365 CID
Prostar	2010-2013	10.5 Liter L6 - 641 CID
	2009-2010	10.8 Liter L6 - 661 CID
	2009-2014	15.2 Liter L6 - 928 CID
	2008-2011	763 CID
	2009-2011	915 CID
RXT	2005-2008	6.0 Liter V8 - 365 CID
Workstar 7600	2009-2014	10.5 Liter L6 - 641 CID
	2008-2014	10.8 Liter L6 - 661 CID
	2009-2014	12.4 Liter L6 - 758 CID
	2008-2011	763 CID
Workstar 7700	2008-2012	10.8 Liter L6 - 661 CID



## Applications

Model	Year	Engine
1452SC	1987-1988	6.9 Liter V8 - 6884 CC, 420 CID
	1988-1992	7.3 Liter V8 - 7277 CC, 444 CID
1652SC	1990-1994	5.9 Liter L6 - 5900 CC, 360 CID
	2004-2012	6.0 Liter V8 - 5982 CC, 365 CID
2155	1994-2005	7.3 Liter V8 - 7277 CC, 444 CID
	1980-1989	7.6 Liter L6 - 466 CID
2275	1980-1989	14.0 Liter L6 - 14013 CC, 855 CID
2276S	1983-1989	14.0 Liter L6 - 14013 CC, 855 CID
2375S	1988-1989	7.6 Liter L6 - 466 CID
	1983-1989	10.0 Liter L6 - 10014 CC, 611 CID
2554	1979-2002	7.6 Liter L6 - 466 CID
	1995-2002	8.7 Liter L6 - 8687 CC, 530 CID
2574	1999-2000	14.0 Liter L6 - 14013 CC, 855 CID
	2001-2003	7.6 Liter L6 - 466 CID
2575	1994-2003	8.7 Liter L6 - 8687 CC, 530 CID
	1984-1999	10.0 Liter L6 - 10014 CC, 611 CID
2654	2000-2003	10.3 Liter L6 - 10309 CC, 629 CID
	1994-2003	10.8 Liter L6 - 10834 CC, 661 CID
2674	1980-2002	14.0 Liter L6 - 14013 CC, 855 CID
	1984-1989	10.0 Liter L6 - 10014 CC, 611 CID
2675	1980-1989	14.0 Liter L6 - 14013 CC, 855 CID
	1989-2002	7.6 Liter L6 - 466 CID
2675	2000-2002	8.7 Liter L6 - 8687 CC, 530 CID
	2000	10.8 Liter L6 - 10834 CC, 661 CID
2675	1999-2000	14.0 Liter L6 - 14013 CC, 855 CID
	2001-2003	7.6 Liter L6 - 466 CID
2675	2000-2003	8.7 Liter L6 - 8687 CC, 530 CID
	1984-1999	10.0 Liter L6 - 10014 CC, 611 CID
2675	1998-2003	10.3 Liter L6 - 10309 CC, 629 CID
	1994-2003	10.8 Liter L6 - 10834 CC, 661 CID
2675	1980-2002	14.0 Liter L6 - 14013 CC, 855 CID
	1987-1989	10.0 Liter L6 - 10014 CC, 611 CID
2675	1987-1989	14.0 Liter L6 - 14013 CC, 855 CID

Part # **LTALD31368**

### Cross References\*

**8600313**

**AL9963SB**

**8600307**

**90156570**

**AL9922LL**

**FTL1001281**

**WA2812200N**

\*FOR REFERENCE PURPOSES ONLY

### Specifications

<b>Model</b>	28-SI
<b>Mount</b>	J-Type
<b>Performance Output</b>	12V; 200A
<b>Fan</b>	Internal
<b>Ground Polarity</b>	Negative



### Application Inquiries

\*Call **(630) 202-4660** or write to **info@lotusautomotiveinc.com** for any application queries



## Part # *LTALD31368*

### Cross References\*

**8600313**

**AL9963SB**

**8600307**

**90156570**

**AL9922LL**

**FTL1001281**

**WA2812200N**

\* FOR REFERENCE PURPOSES ONLY

### Specifications

<b>Model</b>	28-SI
<b>Mount</b>	J-Type
<b>Performance Output</b>	12V; 200A
<b>Fan</b>	Internal
<b>Ground Polarity</b>	Negative



### Application Inquiries

\*Call **(630) 202-4660** or write to  
**[info@lotusautomotiveinc.com](mailto:info@lotusautomotiveinc.com)**  
for any application queries



## Applications

Model	Year	Engine
3000	1997-2000	7.3 Liter V8 - 444 CID
	2000-2002	7.6 Liter L6 - 466 CID
	2002	8.5 Liter L4 - 8506 CC, 519 CID
3000IC	2000-2002	7.3 Liter V8 - 444 CID
	2000-2002	7.6 Liter L6 - 466 CID
3000RE	1996-2000	7.3 Liter V8 - 444 CID
	2005	7.6 Liter L6 - 466 CID
	2002	8.7 Liter L6 - 530 CID
3200	2002-2011	6.0 Liter V8 - 365 CID
	2002-2003	7.6 Liter L6 - 466 CID
	2003	8.7 Liter L6 - 530 CID
3300	2005-2011	6.0 Liter V8 - 365 CID
3400	1996-2002	7.3 Liter V8 - 444 CID
3600	1994-2002	7.3 Liter V8 - 444 CID
	1994-2001	7.6 Liter L6 - 466 CID
3800	1994-2004	7.3 Liter V8 - 444 CID
	1990-2004	7.6 Liter L6 - 466 CID
3900FC	1991-1996	7.6 Liter L6 - 466 CID
4200	2002-2003	6.0 Liter V8 - 5982 CC, 365 CID
4200LP	2003	6.0 Liter V8 - 365 CID
4300	2002-2003	7.6 Liter L6 - 466 CID
4300LP	2002-2003	7.6 Liter L6 - 466 CID
4400	2002-2003	7.6 Liter L6 - 466 CID
	2002-2006	8.7 Liter L6 - 8687 CC, 530 CID
	2004-2008	9.3 Liter L6 - 570 CID
4400LP	2002-2003	7.6 Liter L6 - 466 CID
	2002-2005	8.7 Liter L6 - 530 CID
	2005-2007	9.3 Liter L6 - 570 CID
4600	1991-1995	7.3 Liter V8 - 7277 CC, 444 CID
4600LP	1994	7.3 Liter V8 - 444 CID
4700	1990-1994	5.9 Liter L6 - 5900 CC, 360 CID
	1994-2002	7.3 Liter V8 - 7277 CC, 444 CID
	1990-2003	7.6 Liter L6 - 466 CID
	1996-2003	8.7 Liter L6 - 8687 CC, 530 CID

## Applications

Model	Year	Engine
4700LP	1990-1992	5.9 Liter L6 - 360 CID
	1994-2002	7.3 Liter V8 - 444 CID
	1994-2002	7.6 Liter L6 - 466 CID
	1997-2002	8.7 Liter L6 - 530 CID
4700LPX	1995-2002	7.3 Liter V8 - 444 CID
4800	1990-1994	5.9 Liter L6 - 5900 CC, 360 CID
	1995-1997	7.3 Liter V8 - 7277 CC, 444 CID
	1990-2003	7.6 Liter L6 - 466 CID
	1996-2003	8.7 Liter L6 - 8687 CC, 530 CID
4900	1992-1993	5.9 Liter L6 - 5900 CC, 360 CID
	1995-1997	7.3 Liter V8 - 7277 CC, 444 CID
	1990-2003	7.6 Liter L6 - 466 CID
	1994-2004	8.7 Liter L6 - 8687 CC, 530 CID
5000	1995-2000	8.7 Liter L6 - 8687 CC, 530 CID
	1990-1998	10.0 Liter L6 - 10014 CC, 611 CID
	1998-2000	10.3 Liter L6 - 10309 CC, 629 CID
	1994-1997	10.8 Liter L6 - 10834 CC, 661 CID
	1990-1999	14.0 Liter L6 - 14013 CC, 855 CID
	1999-1999	14.6 Liter L6 - 14636 CC, 893 CID
5070	1995-2000	8.7 Liter L6 - 8687 CC, 530 CID
	1985-1998	10.0 Liter L6 - 10014 CC, 611 CID
	1999-2000	10.3 Liter L6 - 10309 CC, 629 CID
	1995-2000	10.8 Liter L6 - 10834 CC, 661 CID
	1984-2000	14.0 Liter L6 - 14013 CC, 855 CID
	1993-1999	14.6 Liter L6 - 14636 CC, 893 CID
5500i	2001-2002	7.6 Liter L6 - 466 CID
	2000-2003	8.7 Liter L6 - 8687 CC, 530 CID
	2000-2003	10.3 Liter L6 - 10309 CC, 629 CID
	2000-2003	10.8 Liter L6 - 10834 CC, 661 CID
	2000-2002	14.0 Liter L6 - 14013 CC, 855 CID
5600i	2000-2003	14.6 Liter L6 - 14636 CC, 893 CID
	2001-2002	7.6 Liter L6 - 466 CID
	2000-2003	8.7 Liter L6 - 8687 CC, 530 CID
	2001-2004	10.3 Liter L6 - 10309 CC, 629 CID

Part # **LTALD31368**

### Cross References\*

**8600313**

**AL9963SB**

**8600307**

**90156570**

**AL9922LL**

**FTL1001281**

**WA2812200N**

\*FOR REFERENCE PURPOSES ONLY

### Specifications

<b>Model</b>	28-SI
<b>Mount</b>	J-Type
<b>Performance Output</b>	12V; 200A
<b>Fan</b>	Internal
<b>Ground Polarity</b>	Negative



### Application Inquiries

\*Call **(630) 202-4660** or write to **info@lotusautomotiveinc.com** for any application queries



## Applications

Model	Year	Engine	
5600i	2000-2003	10.8 Liter L6 - 10834 CC, 661 CID	
	2000-2002	14.0 Liter L6 - 14013 CC, 855 CID	
	2000-2003	14.6 Liter L6 - 14636 CC, 893 CID	
	2000-2003	732 CID	
5900i	2000-2003	10.8 Liter L6 - 10834 CC, 661 CID	
	2000-2002	14.0 Liter L6 - 14013 CC, 855 CID	
7100	1990-1995	7.6 Liter L6 - 466 CID	
	1994-1995	8.7 Liter L6 - 8687 CC, 530 CID	
7300	2002-2016	7.6 Liter L6 - 466 CID	
7400	2002-2003	7.6 Liter L6 - 466 CID	
	2002-2003	8.7 Liter L6 - 8687 CC, 530 CID	
7500	2002	7.6 Liter L6 - 466 CID	
	2002-2003	8.7 Liter L6 - 8687 CC, 530 CID	
7600	2003	10.8 Liter L6 - 10834 CC, 661 CID	
	2003	10.8 Liter L6 - 10834 CC, 661 CID	
8100	1990-2003	7.6 Liter L6 - 466 CID	
	1994-1998	8.5 Liter L4 - 8506 CC, 519 CID	
	1994-2003	8.7 Liter L6 - 8687 CC, 530 CID	
	1990-1999	10.0 Liter L6 - 10014 CC, 611 CID	
	1998-2003	10.3 Liter L6 - 10309 CC, 629 CID	
	1994-2003	10.8 Liter L6 - 10834 CC, 661 CID	
	1990-1996	11.1 Liter L6 - 11096 CC, 677 CID	
	1990-1996	12.7 Liter L6 - 12686 CC, 774 CID	
	1990-1999	14.0 Liter L6 - 14013 CC, 855 CID	
	8200	1996-1997	7.6 Liter L6 - 466 CID
1997		8.5 Liter L4 - 8506 CC, 519 CID	
1996-1997		8.7 Liter L6 - 8687 CC, 530 CID	
1990-1997		10.0 Liter L6 - 10014 CC, 611 CID	
1994-1997		10.8 Liter L6 - 10834 CC, 661 CID	
1990-1997		11.1 Liter L6 - 11096 CC, 677 CID	
1990-1996		12.7 Liter L6 - 12686 CC, 774 CID	
1990-1997		14.0 Liter L6 - 14013 CC, 855 CID	
8300		1988-1994	10.0 Liter L6 - 10014 CC, 611 CID
		1990-1994	11.1 Liter L6 - 11096 CC, 677 CID
	1990-1994	12.7 Liter L6 - 12686 CC, 774 CID	

Part # **LTALD31368**

### Cross References\*

**8600313**

**AL9963SB**

**8600307**

**90156570**

**AL9922LL**

**FTL1001281**

**WA2812200N**

\*FOR REFERENCE PURPOSES ONLY

### Specifications

<b>Model</b>	28-SI
<b>Mount</b>	J-Type
<b>Performance Output</b>	12V; 200A
<b>Fan</b>	Internal
<b>Ground Polarity</b>	Negative



### Application Inquiries

\*Call **(630) 202-4660** or write to **info@lotusautomotiveinc.com** for any application queries



Part # **LTALD31368**

Cross References\*

**8600313**

**AL9963SB**

**8600307**

**90156570**

**AL9922LL**

**FTL1001281**

**WA2812200N**

\*FOR REFERENCE PURPOSES ONLY

Specifications

<b>Model</b>	28-SI
<b>Mount</b>	J-Type
<b>Performance Output</b>	12V; 200A
<b>Fan</b>	Internal
<b>Ground Polarity</b>	Negative



**Application Inquiries**

\*Call **(630) 202-4660** or write to  
**info@lotusautomotiveinc.com**  
for any application queries



**Applications**

Model	Year	Engine
8300	1988-1994	14.0 Liter L6 - 14013 CC, 855 CID
8500	2002-2003	8.7 Liter L6 - 8687 CC, 530 CID
8600 SBA	2003	10.3 Liter L6 - 10309 CC, 629 CID
	2003	10.8 Liter L6 - 10834 CC, 661 CID
	2003	732 CID
9100SBA	1998	10.8 Liter L6 - 10834 CC, 661 CID
	1998-1999	11.1 Liter L6 - 11096 CC, 677 CID
	1998-1999	14.0 Liter L6 - 14013 CC, 855 CID
9100i SBA	2001-2003	10.8 Liter L6 - 10834 CC, 661 CID
	2000-2002	14.0 Liter L6 - 14013 CC, 855 CID
9200 SBA	1993-1994	10.0 Liter L6 - 10014 CC, 611 CID
	1998-2000	10.3 Liter L6 - 10309 CC, 629 CID
	1994-2000	10.8 Liter L6 - 10834 CC, 661 CID
	1994-2000	11.1 Liter L6 - 11096 CC, 677 CID
	1994-2000	12.7 Liter L6 - 12686 CC, 774 CID
	1994-2000	14.0 Liter L6 - 14013 CC, 855 CID
	1996	14.6 Liter L6 - 14636 CC, 893 CID
	1993-1997	629 CID
	1997-2000	732 CID
	1999	915 CID
9200i SBA	2000-2003	10.3 Liter L6 - 10309 CC, 629 CID
	2001-2003	10.8 Liter L6 - 10834 CC, 661 CID
	2000-2002	14.0 Liter L6 - 14013 CC, 855 CID
	2004	14.6 Liter L6 - 14640 CC, 893 CID
	2002-2003	14.6 Liter L6 - 14636 CC, 893 CID
	2003	14.9 Liter L6 - 912 CID
	2000-2003	732 CID
	2000-2002	915 CID
9300	1990-1998	7.6 Liter L6 - 466 CID
	1988-1988	9.0 Liter V6 - 9047 CC, 552 CID
	1988-1994	10.0 Liter L6 - 10014 CC, 611 CID
	1994-1999	10.8 Liter L6 - 10834 CC, 661 CID
	1992-1998	11.1 Liter L6 - 11096 CC, 677 CID
	1988	12.1 Liter V8 - 12063 CC, 736 CID

# Applications

Model	Year	Engine
9300	1992-1999	12.7 Liter L6 - 12686 CC, 774 CID
	1988-1999	14.0 Liter L6 - 14013 CC, 855 CID
	1988-2000	14.6 Liter L6 - 14636 CC, 893 CID
9370	1985-1987	9.0 Liter V6 - 9047 CC, 552 CID
	1986-1987	10.0 Liter L6 - 10014 CC, 611 CID
	1985	12.1 Liter V8 - 12063 CC, 736 CID
	1985-1987	14.0 Liter L6 - 14013 CC, 855 CID
9400	1986-1987	14.6 Liter L6 - 14636 CC, 893 CID
	1990-1994	10.0 Liter L6 - 10014 CC, 611 CID
9400i SBA	1995-2000	10.8 Liter L6 - 10834 CC, 661 CID
	1992-2000	11.1 Liter L6 - 11096 CC, 677 CID
	1992-2000	12.7 Liter L6 - 12686 CC, 774 CID
	1990-2000	14.0 Liter L6 - 14013 CC, 855 CID
	1990-2000	14.6 Liter L6 - 14636 CC, 893 CID
	2000	8.5 Liter L4 - 8506 CC, 519 CID
	2001-2003	10.8 Liter L6 - 10834 CC, 661 CID
	2000	11.1 Liter L6 - 11096 CC, 677 CID
9600	2000-2003	12.7 Liter L6 - 12686 CC, 774 CID
	2000-2002	14.0 Liter L6 - 14013 CC, 855 CID
	2000-2003	14.6 Liter L6 - 14636 CC, 893 CID
	2003	14.9 Liter L6 - 912 CID
	2000-2003	732 CID
	2000-2002	915 CID
	2000-2002	915 CID
9700	1989-1994	10.0 Liter L6 - 10014 CC, 611 CID
	1994-1996	10.8 Liter L6 - 10834 CC, 661 CID
	1992-1996	11.1 Liter L6 - 11096 CC, 677 CID
	1995-1996	12.7 Liter L6 - 12686 CC, 774 CID
	1989-1996	14.0 Liter L6 - 14013 CC, 855 CID
9800SBA	1989-1994	10.0 Liter L6 - 10014 CC, 611 CID
	1994-1996	10.8 Liter L6 - 10834 CC, 661 CID
	1992-1996	11.1 Liter L6 - 11096 CC, 677 CID
	1995-1996	12.7 Liter L6 - 12686 CC, 774 CID
	1989-1996	14.0 Liter L6 - 14013 CC, 855 CID
9800SBA	1996-1999	10.8 Liter L6 - 10834 CC, 661 CID

Part # **LTALD31368**

### Cross References\*

**8600313**

**AL9963SB**

**8600307**

**90156570**

**AL9922LL**

**FTL1001281**

**WA2812200N**

\* FOR REFERENCE PURPOSES ONLY

### Specifications

<b>Model</b>	28-SI
<b>Mount</b>	J-Type
<b>Performance Output</b>	12V; 200A
<b>Fan</b>	Internal
<b>Ground Polarity</b>	Negative



\*Call **(630) 202-4660** or write to **info@lotusautomotiveinc.com** for any application queries



# Applications

Model	Year	Engine
9800 SBA	1996-1999	11.1 Liter L6 - 11096 CC, 677 CID
	1996-1996	12.7 Liter L6 - 12686 CC, 774 CID
	1996-1999	14.0 Liter L6 - 14013 CC, 855 CID
9900	1999-2000	10.8 Liter L6 - 10834 CC, 661 CID
	1999-2000	12.7 Liter L6 - 12686 CC, 774 CID
	1999-2000	14.0 Liter L6 - 14013 CC, 855 CID
9900 SFA	1999	11.1 Liter L6 - 11096 CC, 677 CID
	1999	14.0 Liter L6 - 14013 CC, 855 CID
	1999-2000	14.6 Liter L6 - 14636 CC, 893 CID
9900i	2000-2003	10.8 Liter L6 - 10834 CC, 661 CID
	2000-2002	14.0 Liter L6 - 14013 CC, 855 CID
	2000-2003	14.6 Liter L6 - 14636 CC, 893 CID
	2013	15.2 Liter L6 - 928 CID
	2000-2004	732 CID
	2000-2011	915 CID
9900i SFA	2001-2003	10.8 Liter L6 - 10834 CC, 661 CID
	2000-2002	14.0 Liter L6 - 14013 CC, 855 CID
9900ix	2000-2002	14.0 Liter L6 - 14013 CC, 855 CID
	2000-2003	14.6 Liter L6 - 14636 CC, 893 CID
	2000	732 CID
	2000-2009	915 CID
9900ix SFA	2001-2002	10.8 Liter L6 - 10834 CC, 661 CID
	2001-2002	12.7 Liter L6 - 12686 CC, 774 CID
	2001-2002	14.0 Liter L6 - 14013 CC, 855 CID
	2003	14.6 Liter L6 - 14636 CC, 893 CID

## Part # **LTALD31368**

### Cross References\*

**8600313**

**AL9963SB**

**8600307**

**90156570**

**AL9922LL**

**FTL1001281**

**WA2812200N**

\* FOR REFERENCE PURPOSES ONLY

### Specifications

<b>Model</b>	28-SI
<b>Mount</b>	J-Type
<b>Performance Output</b>	12V; 200A
<b>Fan</b>	Internal
<b>Ground Polarity</b>	Negative



**Application Inquiries**

\*Call **(630) 202-4660** or write to **info@lotusautomotiveinc.com** for any application queries



## Part # *LTALD41368*

### Cross References\*

8600314

AM0071

8600253

8600315

8600316

A0014939AAH

8741N

A987410200PM

\* FOR REFERENCE PURPOSES ONLY

### Specifications

<b>Model</b>	28-SI
<b>Mount</b>	Pad-Type
<b>Performance Output</b>	12V; 200A
<b>Rotation</b>	Clockwise
<b>Ground Polarity</b>	Negative



### Application Inquiries

\*Call **(630) 202-4660** or write to **info@lotusautomotiveinc.com** for any application queries



## Applications

Model	Year	Engine
3000RE	2015-2020	7.6 Liter L6 - 466 CID
3200	2008-2011	6.0 Liter V8 - 365 CID
	2008-2011	6.4 Liter V8 - 389 CID
	2009-2011	7.6 Liter L6 - 466 CID
3300	2008-2011	6.0 Liter V8 - 365 CID
4100	2006-2012	6.0 Liter V8 - 365 CID
	2008-2011	6.4 Liter V8 - 389 CID
4100 SBA	2006-2008	6.0 Liter V8 - 365 CID
4200	2004-2010	6.0 Liter V8 - 365 CID
4200LP	2004-2008	6.0 Liter V8 - 365 CID
4300	2004-2013	7.6 Liter L6 - 466 CID
	2014-2020	6.7 Liter L6 - 408 CID
	2004-2018	7.6 Liter L6 - 466 CID
4300LP	2004-2012	7.6 Liter L6 - 466 CID
	2016-2019	6.7 Liter L6 - 408 CID
	2004-2016	7.6 Liter L6 - 466 CID
4400	2004-2016	7.6 Liter L6 - 466 CID
	2017-2020	8.9 Liter L6 - 540 CID
	2007-2019	9.3 Liter L6 - 570 CID
4400LP	2004-2016	7.6 Liter L6 - 466 CID
	2019	8.9 Liter L6 - 540 CID
	2008-2018	9.3 Liter L6 - 570 CID
4700	2018-2020	6.7 Liter L6 - 408 CID
	2008-2018	7.6 Liter L6 - 466 CID
4900	2004-2005	7.6 Liter L6 - 466 CID
5500i	2004-2005	8.7 Liter L6 - 530 CID
	2012-2014	10.5 Liter L6 - 641 CID
	2004-2012	10.8 Liter L6 - 661 CID
	2004-2011	14.9 Liter L6 - 912 CID
5600i	2003	7.6 Liter L6 - 466 CID
	2004-2005	8.7 Liter L6 - 530 CID
	2007-2011	8.9 Liter L6 - 540 CID
	2012-2014	10.5 Liter L6 - 641 CID
	2004-2012	10.8 Liter L6 - 661 CID

## Applications

Model	Year	Engine
5600i	2004	14.6 Liter L6 - 893 CID
	2004-2011	14.9 Liter L6 - 912 CID
	2005-2008	15.2 Liter L6 - 928 CID
5900i	2004-2011	10.8 Liter L6 - 661 CID
	2015-2017	12.4 Liter L6 - 758 CID
	2012-2017	14.9 Liter L6 - 912 CID
7300	2016-2020	6.7 Liter L6 - 408 CID
	2004-2017	7.6 Liter L6 - 466 CID
7400	2004-2016	7.6 Liter L6 - 466 CID
	2004-2019	8.7 Liter L6 - 530 CID
	2017-2020	8.9 Liter L6 - 540 CID
7500	2007-2019	9.3 Liter L6 - 570 CID
	2008-2011	7.6 Liter L6 - 466 CID
	2003-2005	8.7 Liter L6 - 530 CID
7600	2017-2020	8.9 Liter L6 - 540 CID
	2007-2019	9.3 Liter L6 - 570 CID
	2007	9.3 Liter L6 - 570 CID
7700	2003-2004	10.3 Liter L6 - 629 CID
	2004-2007	10.8 Liter L6 - 661 CID
	2009-2017	12.4 Liter L6 - 758 CID
8500	2005-2007	10.8 Liter L6 - 661 CID
	2005-2007	763 CID
8500 TranStar	2004-2005	8.7 Liter L6 - 530 CID
	2007	9.3 Liter L6 - 570 CID
8500 TranStar	2008-2011	9.3 Liter L6 - 570 CID
	2008-2011	10.8 Liter L6 - 661 CID
8600 SBA	2004	10.3 Liter L6 - 629 CID
	2004-2007	10.8 Liter L6 - 661 CID
	2005-2007	677 CID
	2004-2005	732 CID
	2004-2007	763 CID
8600 TranStar	2014-2015	8.9 Liter L6 - 540 CID
	2009-2014	10.5 Liter L6 - 641 CID
	2008-2011	10.8 Liter L6 - 661 CID

Part # **LTALD41368**

### Cross References\*

8600314

AM0071

8600253

8600315

8600316

A0014939AAH

8741N

A987410200PM

\* FOR REFERENCE PURPOSES ONLY

### Specifications

<b>Model</b>	28-SI
<b>Mount</b>	Pad-Type
<b>Performance Output</b>	12V; 200A
<b>Rotation</b>	Clockwise
<b>Ground Polarity</b>	Negative



### Application Inquiries

\*Call **(630) 202-4660** or write to **info@lotusautomotiveinc.com** for any application queries



Part # **LTALD41368**

Cross References\*

**8600314**

**AM0071**

**8600253**

**8600315**

**8600316**

**A0014939AAH**

**8741N**

**A987410200PM**

\*FOR REFERENCE PURPOSES ONLY

Specifications

<b>Model</b>	28-SI
<b>Mount</b>	Pad-Type
<b>Performance Output</b>	12V; 200A
<b>Rotation</b>	Clockwise
<b>Ground Polarity</b>	Negative



**Application Inquiries**

\*Call **(630) 202-4660** or write to  
**info@lotusautomotiveinc.com**  
for any application queries



**Applications**

Model	Year	Engine
8600 TranStar	2008-2018	12.4 Liter L6 - 758 CID
9100i SBA	2000	11.1 Liter L6 - 677 CID
	2001-2003	12.7 Liter L6 - 774 CID
9200i SBA	2004-2011	10.8 Liter L6 - 661 CID
	2000	11.1 Liter L6 - 677 CID
	2000-2003	12.7 Liter L6 - 774 CID
	2004	732 CID
	2004-2011	763 CID
	2004	915 CID
9400i SBA	2004-2011	10.8 Liter L6 - 661 CID
	2004-2009	14.6 Liter L6 - 893 CID
	2004-2007	15.2 Liter L6 - 928 CID
	2004	732 CID
	2004-2007	763 CID
9900i	2000-2003	12.7 Liter L6 - 774 CID
	2004	14.6 Liter L6 - 893 CID
	2003-2018	14.9 Liter L6 - 893 CID
	2004-2010	15.2 Liter L6 - 928 CID
	2004-2009	763 CID
9900i SFA	2000	11.1 Liter L6 - 677 CID
	2001-2003	12.7 Liter L6 - 774 CID
9900ix	2000-2002	12.7 Liter L6 - 774 CID
	2004	14.6 Liter L6 - 893 CID
	2004-2009	14.9 Liter L6 - 893 CID
	2004-2008	15.2 Liter L6 - 928 CID
	2006	763 CID
CF500	2005-2009	4.5 Liter V6 - 275 CID
CF600	2005-2009	4.5 Liter V6 - 275 CID
Durastar	2005-2009	4.5 Liter V6 - 275 CID
	2004-2008	15.2 Liter L6 - 928 CID
HV	2020-2024	8.9 Liter L6 - 540 CID
	2023-2024	10.8 Liter L6 - 661 CID
HV 507	2019-2025	6.7 Liter L6 - 408 CID
	2019-2025	549 CID

## Part # **LTALD41368**

### Cross References\*

**8600314**

**AM0071**

**8600253**

**8600315**

**8600316**

**A0014939AAH**

**8741N**

**A987410200PM**

\*FOR REFERENCE PURPOSES ONLY

### Specifications

<b>Model</b>	28-SI
<b>Mount</b>	Pad-Type
<b>Performance Output</b>	12V; 200A
<b>Rotation</b>	Clockwise
<b>Ground Polarity</b>	Negative



### Application Inquiries

\*Call **(630) 202-4660** or write to  
**info@lotusautomotiveinc.com**  
for any application queries



## Applications

Model	Year	Engine
HV 607	2019-2025	6.7 Liter L6 - 408 CID
	2019-2025	549 CID
HX 515	2017-2019	12.4 Liter L6 - 758 CID
HX 520	2018-2025	14.9 Liter L6 - 912 CID
HX 615	2017-2019	12.4 Liter L6 - 758 CID
HX 620	2017-2025	14.9 Liter L6 - 912 CID
LT	2020-2024	14.9 Liter L6 - 912 CID
LT 625	2017-2025	14.9 Liter L6 - 912 CID
LoneStar	2010-2011	10.8 Liter L6 - 661 CID
	2009-2024	14.9 Liter L6 - 912 CID
	2010	15.2 Liter L6 - 928 CID
	2009-2019	915 CID
MV	2020-2024	6.7 Liter L6 - 408 CID
	2020-2023	8.9 Liter L6 - 540 CID
MV 607	2019-2025	6.7 Liter L6 - 408 CID
	2019-2025	549 CID
MXT	2007-2009	6.0 Liter V8 - 365 CID
ProStar	2010-2014	10.5 Liter L6 - 641 CID
	2009-2010	10.8 Liter L6 - 661 CID
	2008-2019	12.4 Liter L6 - 758 CID
	2008-2020	14.9 Liter L6 - 912 CID
	2009-2014	15.2 Liter L6 - 928 CID
	2008-2011	763 CID
	2009-2019	915 CID
RE	2023	8.9 Liter L6 - 540 CID
RXT	2005-2008	6.0 Liter V8 - 365 CID
TerraStar	2010-2018	6.4 Liter V8 - 389 CID
TranStar	2015-2019	10.8 Liter L6 - 661 CID
Traveler	2015-2017	7.6 Liter L6 - 466 CID
UrbanStar	2021-2022	8.9 Liter L6 - 540 CID
WorkStar 7300	2015-2017	7.6 Liter L6 - 466 CID
	2009-2019	9.3 Liter L6 - 570 CID
WorkStar 7400	2019-2020	9.3 Liter L6 - 570 CID
WorkStar 7600	2009-2014	10.5 Liter L6 - 641 CID



## Part # *LTALD62168*

### Cross References\*

*8600126*

*7940*

*110800*

*110801*

*110802*

*1012118120*

*90014057*

*90014058*

\*FOR REFERENCE PURPOSES ONLY

### Specifications

<b>Model</b>	36-SI
<b>Mount</b>	J-Type
<b>Performance Output</b>	12V; 170A
<b>Brush Type</b>	Brushless
<b>Ground Polarity</b>	Negative



### Application Inquiries

\*Call **(630) 202-4660** or write to  
**info@lotusautomotiveinc.com**  
for any application queries



## Applications

Model	Year	Engine
1452	1988-1992	7.3 Liter V8 - 444 CID (T444E)
1452SC	1987-1988	6.9 Liter V8 - 420 CID (1452SC Engine)
	1988-1992	7.3 Liter V8 - 444 CID (T444E)
1652	1988-1992	5.9 Liter L6 - 360 CID (DT360)
	1993-2003	7.3 Liter V8 - 444 CID (T444E)
1652SC	1990-1994	5.9 Liter L6 - 360 CID (DT360)
	2004-2012	6.0 Liter V8 - 365 CID (1652SC Engine)
	1994-2005	7.3 Liter V8 - 444 CID (T444E)
1654	1993-2003	7.3 Liter V8 - 444 CID (T444E)
2155	1980-1989	7.6 Liter L6 - 466 CID (2155 Engine)
2275	1980-1989	14.0 Liter L6 - 855 CID (2275 Engine)
2276 S	1983-1989	14.0 Liter L6 - 855 CID (2275 Engine)
2300	1993-1996	8.7 Liter L6 - 530 CID (DT530)
	1993-1996	10.0 Liter L6 - 610 CID (L10)
	1993-2000	14.0 Liter L6 - 855 CID (2275 Engine)
2375	1993-1996	8.7 Liter L6 - 530 CID (DT530)
	1993-1996	10.0 Liter L6 - 610 CID (L10)
	1993-2000	14.0 Liter L6 - 855 CID (2275 Engine)
2375S	1988-1989	7.6 Liter L6 - 466 CID (2155 Engine)
	1983-1989	10.0 Liter L6 - 611 CID (2375 S Engine)
2554	1979-2002	7.6 Liter L6 - 466 CID (2155 Engine)
	1995-2002	8.7 Liter L6 - 530 CID (DT530)
	1999-2000	14.0 Liter L6 - 855 CID (2275 Engine)
2564	1993-2000	7.6 Liter L6 - 466 CID (2155 Engine)
	1997-2000	8.7 Liter L6 - 530 CID (DT530)
2574	1991-1997	629 CID
	1997-2003	732 CID
	2001-2003	7.6 Liter L6 - 466 CID (2155 Engine)
	1994-2003	8.7 Liter L6 - 530 CID (DT530)
	1984-1999	10.0 Liter L6 - 611 CID (2375 S Engine)
	2000-2003	10.3 Liter L6 - 629 CID (2574 Engine)
	1994-2003	10.8 Liter L6 - 661 CID (2574 Engine)
	1980-2002	14.0 Liter L6 - 855 CID (2275 Engine)
2575	1997-1999	8.7 Liter L6 - 530 CID (DT530)

## Part # *LTALD62168*

### Cross References\*

*8600126*

*7940*

*110800*

*110801*

*110802*

*1012118120*

*90014057*

*90014058*

\*FOR REFERENCE PURPOSES ONLY

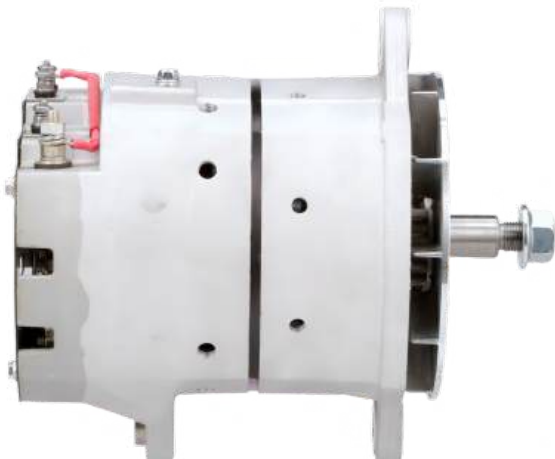
### Specifications

<b>Model</b>	36-SI
<b>Mount</b>	J-Type
<b>Performance Output</b>	12V; 170A
<b>Brush Type</b>	Brushless
<b>Ground Polarity</b>	Negative



### Application Inquiries

\*Call **(630) 202-4660** or write to  
**info@lotusautomotiveinc.com**  
for any application queries



## Applications

Model	Year	Engine	
2575	1997-1999	8.7 Liter L6 - 530 CID ( <i>DT530</i> )	
	1997-2003	10.0 Liter L6 - 610 CID ( <i>L10</i> )	
	1984-1989	10.0 Liter L6 - 611 CID ( <i>2375 S Engine</i> )	
	1997-2000	10.8 Liter L6 - 661 CID ( <i>2574 Engine</i> )	
	1997-2000	12.0 Liter L6 - 732 CID ( <i>C12</i> )	
2654	1980-1989	14.0 Liter L6 - 855 CID ( <i>2275 Engine</i> )	
	198-2002	7.6 Liter L6 - 466 CID ( <i>2155 Engine</i> )	
	2000-2002	8.7 Liter L6 - 530 CID ( <i>DT530</i> )	
	2000	10.8 Liter L6 - 661 CID ( <i>2574 Engine</i> )	
2674	1999-2000	14.0 Liter L6 - 855 CID ( <i>2275 Engine</i> )	
	1989-1997	629 CID ( <i>2574 Engine</i> )	
	1997-2003	732 CID ( <i>2574 Engine</i> )	
2675	2001-2003	7.6 Liter L6 - 466 CID ( <i>2155 Engine</i> )	
	2000-2003	8.7 Liter L6 - 530 CID ( <i>DT530</i> )	
	1984-1999	10.0 Liter L6 - 611 CID ( <i>2375 S Engine</i> )	
	1998-2003	10.3 Liter L6 - 629 CID ( <i>2574 Engine</i> )	
	1997-1999	10.3 Liter L4 - 629 CID ( <i>3176 Engine</i> )	
	1994-2003	10.8 Liter L6 - 661 CID ( <i>2574 Engine</i> )	
	1980-2002	14.0 Liter L6 - 855 CID ( <i>2275 Engine</i> )	
	1990-2000	10.0 Liter L6 - 610 CID ( <i>L10</i> )	
	1987-1989	10.0 Liter L6 - 611 CID ( <i>2375 S Engine</i> )	
	1997-2000	10.3 Liter L6 - 629 CID ( <i>2574 Engine</i> )	
3000	1997-1999	10.3 Liter L4 - 629 CID ( <i>3176</i> )	
	1997-2000	10.8 Liter L6 - 661 CID ( <i>2574 Engine</i> )	
	1997-2000	12.0 Liter L6 - 732 CID ( <i>C12</i> )	
	1987-1989	14.0 Liter L6 - 855 CID ( <i>2275 Engine</i> )	
	1997-2000	7.3 Liter V8 - 444 CID ( <i>T444E</i> )	
	2000-2002	7.6 Liter L6 - 466 CID ( <i>2155 Engine</i> )	
	2002	8.5 Liter L4 - 519 CID ( <i>3000 Engine</i> )	
	3000-3900 Series	1988-1992	5.9 Liter L6 - 360 CID ( <i>DT360</i> )
		1999-2007	6.0 Liter V8 - 365 CID ( <i>1652SC Engine</i> )
		1993-2004	7.3 Liter V8 - 444 CID ( <i>T444E</i> )
1993-2007		7.6 Liter L6 - 466 CID ( <i>2155 Engine</i> )	
3000IC	2000-2002	7.3 Liter V8 - 444 CID ( <i>T444E</i> )	

## Part # *LTALD62168*

### Cross References\*

8600126

7940

110800

110801

110802

1012118120

90014057

90014058

\*FOR REFERENCE PURPOSES ONLY

### Specifications

<b>Model</b>	36-SI
<b>Mount</b>	J-Type
<b>Performance Output</b>	12V; 170A
<b>Brush Type</b>	Brushless
<b>Ground Polarity</b>	Negative



### Application Inquiries

\*Call **(630) 202-4660** or write to  
**info@lotusautomotiveinc.com**  
for any application queries



## Applications

Model	Year	Engine
3000IC	2000-2002	7.6 Liter L6 - 466 CID (2155 Engine)
3000RE	1996-2000	7.3 Liter V8 - 444 CID (T444E)
	2005	7.6 Liter L6 - 466 CID (2155 Engine)
	2002	8.7 Liter L6 - 530 CID (DT530)
3200	2002-2011	6.0 Liter V8 - 365 CID (1652SC Engine)
	2002-2003	7.6 Liter L6 - 466 CID (2155 Engine)
	2003	8.7 Liter L6 - 530 CID (DT530)
3300	2005-2011	6.0 Liter V8 - 365 CID (1652SC Engine)
3400	1996-2002	7.3 Liter V8 - 444 CID (T444E)
3600	1994-2002	7.3 Liter V8 - 444 CID (T444E)
	1994-2001	7.6 Liter L6 - 466 CID (2155 Engine)
3800	1994-2004	7.3 Liter V8 - 444 CID (T444E)
	1990-2004	7.6 Liter L6 - 466 CID (2155 Engine)
3900FC	1991-1996	7.6 Liter L6 - 466 CID (2155 Engine)
4000-4900 Series	1997-1999	14.0 Liter L6 - 855 CID (2275 Engine)
	1997-1999	14.6 Liter L6 - 893 CID (3406)
4200	2002-2003	6.0 Liter V8 - 365 CID (1652SC Engine)
4200LP	2003	6.0 Liter V8 - 365 CID (1652SC Engine)
4300	2002-2003	7.6 Liter L6 - 466 CID (2155 Engine)
4300LP	2002-2003	7.6 Liter L6 - 466 CID (2155 Engine)
4400	2002-2003	7.6 Liter L6 - 466 CID (2155 Engine)
	2002-2006	8.7 Liter L6 - 530 CID (DT530)
	2004-2008	9.3 Liter L6 - 570 CID (4400 Engine)
4400LP	2002-2003	7.6 Liter L6 - 466 CID (2155 Engine)
	2002-2005	8.7 Liter L6 - 530 CID (DT530)
	2005-2007	9.3 Liter L6 - 570 CID (4400 Engine)
4600	1991-1995	7.3 Liter V8 - 444 CID (T444E)
4600LP	1994	7.3 Liter V8 - 444 CID (T444E)
4700	1990-1994	5.9 Liter L6 - 360 CID (DT360)
	1994-2002	7.3 Liter V8 - 444 CID (T444E)
	1990-2003	7.6 Liter L6 - 466 CID (2155 Engine)
	1996-2003	8.7 Liter L6 - 530 CID (DT530)
4700LPX	1995-2002	7.3 Liter V8 - 444 CID (T444E)
4800	1990-1994	5.9 Liter L6 - 360 CID (DT360)

## Part # *LTALD62168*

### Cross References\*

8600126

7940

110800

110801

110802

1012118120

90014057

90014058

\*FOR REFERENCE PURPOSES ONLY

### Specifications

<b>Model</b>	36-SI
<b>Mount</b>	J-Type
<b>Performance Output</b>	12V; 170A
<b>Brush Type</b>	Brushless
<b>Ground Polarity</b>	Negative



### Application Inquiries

\*Call **(630) 202-4660** or write to  
**info@lotusautomotiveinc.com**  
for any application queries

## Applications

Model	Year	Engine
4800	1995-1997	7.3 Liter V8 - 444 CID (T444E)
	1990-2003	7.6 Liter L6 - 466 CID (2155 Engine)
	1996-2003	8.7 Liter L6 - 530 CID (DT530)
4900	1992-1993	5.9 Liter L6 - 360 CID (DT360)
	1995-1997	7.3 Liter V8 - 444 CID (T444E)
	1990-2003	7.6 Liter L6 - 466 CID (2155 Engine)
5000	1994-2004	8.7 Liter L6 - 530 CID (DT530)
	1994-1997	629 CID (2574 Engine)
	1998	732 CID (2574 Engine)
5000-5090 Series	1995-2000	8.7 Liter L6 - 530 CID (DT530)
	1990-2008	10.0 Liter L6 - 611 CID (2375 S Engine)
	1998-2000	10.3 Liter L6 - 629 CID (2574 Engine)
5070	1994-1997	10.8 Liter L6 - 661 CID (2574 Engine)
	1990-1999	14.0 Liter L6 - 855 CID (2275 Engine)
	1999	14.6 Liter L6 - 893 CID (3406)
5500i	1997-2003	8.7 Liter L6 - 530 CID (DT530)
	1993-1999	10.0 Liter L6 - 610 CID (L10)
	1993-2003	10.3 Liter L6 - 629 CID (2574 Engine)
5500i	1993-1999	10.8 Liter L6 - 661 CID (2574 Engine)
	1993-2003	12.0 Liter L6 - 732 CID (C12)
	1997-1999	14.0 Liter L6 - 855 CID (2275 Engine)
5500i	1992-1995	629 CID (2574 Engine)
	1999	732 CID (2574 Engine)
	1995-2000	8.7 Liter L6 - 530 CID (DT530)
5500i	1985-1998	10.0 Liter L6 - 611 CID (2375 S Engine)
	1999-2000	10.3 Liter L6 - 629 CID (2574 Engine)
	1995-2000	10.8 Liter L6 - 661 CID (2574 Engine)
5500i	1984-2000	14.0 Liter L6 - 855 CID (2275 Engine)
	1993-1999	14.6 Liter L6 - 893 CID (3406)
	2000-2004	732 CID (2574 Engine)
5500i	2010-2011	915 CID (5500i Engine)
	2001-2002	7.6 Liter L6 - 466 CID (2155 Engine)
	2000-2003	8.7 Liter L6 - 530 CID (DT530)
5500i	2000-2003	10.3 Liter L6 - 629 CID (2574 Engine)



## Part # *LTALD62168*

### Cross References\*

8600126

7940

110800

110801

110802

1012118120

90014057

90014058

\*FOR REFERENCE PURPOSES ONLY

### Specifications

<b>Model</b>	36-SI
<b>Mount</b>	J-Type
<b>Performance Output</b>	12V; 170A
<b>Brush Type</b>	Brushless
<b>Ground Polarity</b>	Negative

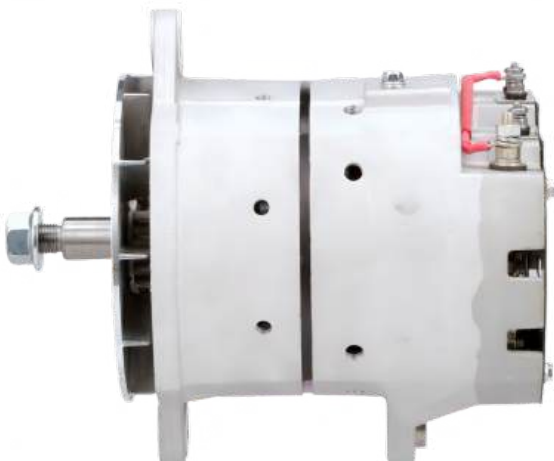


### Application Inquiries

\*Call **(630) 202-4660** or write to  
**info@lotusautomotiveinc.com**  
for any application queries

## Applications

Model	Year	Engine
5500i	2000-2003	10.8 Liter L6 - 661 CID (2574 Engine)
	2000-2002	14.0 Liter L6 - 855 CID (2275 Engine)
5600i	2000-2003	14.6 Liter L6 - 893 CID (3406)
	2000-2003	732 CID (2574 Engine)
	2001-2002	7.6 Liter L6 - 466 CID (2155 Engine)
	2000-2003	8.7 Liter L6 - 530 CID (DT530)
	2001-2004	10.3 Liter L6 - 629 CID (2574 Engine)
	2000-2003	10.8 Liter L6 - 661 CID (2574 Engine)
	2000-2002	14.0 Liter L6 - 855 CID (2275 Engine)
	2000-2003	14.6 Liter L6 - 893 CID (3406)
5900i	2000-2003	10.8 Liter L6 - 661 CID (2574 Engine)
	2000-2002	14.0 Liter L6 - 855 CID (2275 Engine)
7100	1990-1995	7.6 Liter L6 - 466 CID (2155 Engine)
	1994-1995	8.7 Liter L6 - 530 CID (DT530)
7100-7700	1993-2002	7.6 Liter L6 - 466 CID (2155 Engine)
	2003-2004	10.3 Liter L6 - 629 CID (2574 Engine)
	2003-2004	12.0 Liter L6 - 732 CID (C12)
7300	2002-2016	7.6 Liter L6 - 466 CID (2155 Engine)
7400	2002-2003	7.6 Liter L6 - 466 CID (2155 Engine)
	2002-2003	8.7 Liter L6 - 530 CID (DT530)
7500	2002-2003	7.6 Liter L6 - 466 CID (2155 Engine)
	2002-2003	8.7 Liter L6 - 530 CID (DT530)
7600	2003	10.8 Liter L6 - 661 CID (2574 Engine)
	1999	732 CID (2574 Engine)
	1990-1997	629 CID (2574 Engine)
	1990-2003	7.6 Liter L6 - 466 CID (2155 Engine)
	1994-1998	8.5 Liter L4 - 519 CID (3000 Engine)
	1994-2003	8.7 Liter L6 - 530 CID (DT530)
	1990-1999	10.0 Liter L6 - 611 CID (2375 S Engine)
	1998-2003	10.3 Liter L6 - 629 CID (2574 Engine)
	1994-2003	10.8 Liter L6 - 661 CID (2574 Engine)
	1990-1996	11.1 Liter L6 - 677 CID (8100 Engine)
	1990-1996	12.7 Liter L6 - 774 CID (8100 Engine)
	1990-1999	14.0 Liter L6 - 855 CID (2275 Engine)



## Part # *LTALD62168*

### Cross References\*

8600126

7940

110800

110801

110802

1012118120

90014057

90014058

\*FOR REFERENCE PURPOSES ONLY

### Specifications

<b>Model</b>	36-SI
<b>Mount</b>	J-Type
<b>Performance Output</b>	12V; 170A
<b>Brush Type</b>	Brushless
<b>Ground Polarity</b>	Negative



### Application Inquiries

\*Call **(630) 202-4660** or write to  
**info@lotusautomotiveinc.com**  
for any application queries



## Applications

Model	Year	Engine
8100-8600 Series	1993-2002	7.6 Liter L6 - 466 CID (2155 Engine)
	1992-1998	8.5 Liter L4 - 519 CID (3000 Engine)
	1993-2002	8.7 Liter L6 - 530 CID (DT530)
	1993-2002	9.3 Liter L6 - 570 CID (4400 Engine)
	1993-2003	10.3 Liter L6 - 629 CID (2574 Engine)
	1994-2000	10.8 Liter L6 - 661 CID (2574 Engine)
	1992-2000	12.7 Liter L6 - 774 CID (8100 Engine)
	1993-1999	14.6 Liter L6 - 893 CID (3406)
	1993-1999	14.6 Liter L6 - 893 CID (3406)
	8200	1996-1997
1997-1997		8.5 Liter L4 - 519 CID (3000 Engine)
1996-1997		8.7 Liter L6 - 530 CID (DT530)
1990-1997		10.0 Liter L6 - 611 CID (2375 S Engine)
1994-1997		10.8 Liter L6 - 661 CID (2574 Engine)
1990-1997		11.1 Liter L6 - 677 CID (8100 Engine)
1990-1996		12.7 Liter L6 - 774 CID (8100 Engine)
1990-1997		14.0 Liter L6 - 855 CID (2275 Engine)
8300	1988-1994	10.0 Liter L6 - 611 CID (2375 S Engine)
	1990-1994	11.1 Liter L6 - 677 CID (8100 Engine)
	1990-1994	12.7 Liter L6 - 774 CID (8100 Engine)
	1988-1994	14.0 Liter L6 - 855 CID (2275 Engine)
8500	2002-2003	8.7 Liter L6 - 530 CID (DT530)
8600	2002-2003	732 CID (2574 Engine)
	2003	10.3 Liter L6 - 629 CID (2574 Engine)
	2003	10.8 Liter L6 - 661 CID (2574 Engine)
	2003	10.8 Liter L6 - 661 CID (2574 Engine)
8600 SBA	2003	732 CID (2574 Engine)
	2003	10.3 Liter L6 - 629 CID (2574 Engine)
	2003	10.8 Liter L6 - 661 CID (2574 Engine)
9100 SBA	1998	10.8 Liter L6 - 661 CID (2574 Engine)
	1998-1999	11.1 Liter L6 - 677 CID (8100 Engine)
	1998-1999	14.0 Liter L6 - 855 CID (2275 Engine)
9100-9900 Series	1993-1996	10.0 Liter L6 - 610 CID (L10)
	1993-2003	10.3 Liter L6 - 629 CID (2574 Engine)
	1993-2000	10.8 Liter L6 - 661 CID (2574 Engine)

Part # **LTALD62168**

Cross References\*

8600126

7940

110800

110801

110802

1012118120

90014057

90014058

\*FOR REFERENCE PURPOSES ONLY

Specifications

<b>Model</b>	36-SI
<b>Mount</b>	J-Type
<b>Performance Output</b>	12V; 170A
<b>Brush Type</b>	Brushless
<b>Ground Polarity</b>	Negative



**Application Inquiries**

\*Call **(630) 202-4660** or write to  
**info@lotusautomotiveinc.com**  
for any application queries

**Applications**

Model	Year	Engine
9100-9900 Series	1997-2003	12.0 Liter L6 - 732 CID (C12)
	1992-1998	12.7 Liter L6 - 774 CID (8100 Engine)
	1993-2003	14.0 Liter L6 - 855 CID (2275 Engine)
	1993-2001	14.6 Liter L6 - 893 CID (3406)
	1997-2000	15.0 Liter L6 - 915 CID (ISX)
	1999-1999	15.8 Liter L6 - 964 CID (C16)
9100i SBA	2001-2003	10.8 Liter L6 - 661 CID (2574 Engine)
	2000-2002	14.0 Liter L6 - 855 CID (2275 Engine)
9200 SBA	1993-1997	Liter CC - 629 CID (2574 Engine)
	1997-2000	Liter CC - 732 CID (2574 Engine)
	1999-1999	Liter CC - 915 CID (5500i Engine)
	1993-1994	10.0 Liter L6 - 611 CID (2375 S Engine)
	1998-2000	10.3 Liter L6 - 629 CID (2574 Engine)
	1994-2000	10.8 Liter L6 - 661 CID (2574 Engine)
	1994-2000	11.1 Liter L6 - 677 CID (8100 Engine)
	1994-2000	12.7 Liter L6 - 774 CID (8100 Engine)
	1994-2000	14.0 Liter L6 - 855 CID (2275 Engine)
	1996-1996	14.6 Liter L6 - 893 CID (3406)
9200i SBA	2000-2002	14.6 Liter L6 - 893 CID (3406)
	2000-2003	Liter CC - 732 CID (2574 Engine)
	2000-2003	10.3 Liter L6 - 629 CID (2574 Engine)
	2001-2003	10.8 Liter L6 - 661 CID (2574 Engine)
	2000-2002	14.0 Liter L6 - 855 CID (2275 Engine)
	2002-2004	14.6 Liter L6 - 893 CID (3406)
9300	2003-2003	14.9 Liter L6 - 912 CID (9200i SBA Engine)
	1999-1999	Liter CC - 915 CID (5500i Engine)
	1988-1997	7.6 Liter L6 - 466 CID (2155 Engine)
	1990-1998	7.6 Liter L6 - 466 CID (2155 Engine)
	1988-1988	9.0 Liter V6 - 552 CID (9300 Engine)
	1988-1994	10.0 Liter L6 - 611 CID (2375 S Engine)
	1992-1998	11.1 Liter L6 - 677 CID (8100 Engine)
	1988-1988	12.1 Liter V8 - 736 CID (9300 Engine)
	1992-1999	12.7 Liter L6 - 774 CID (8100 Engine)
	1988-1999	14.0 Liter L6 - 855 CID (2275 Engine)



## Part # *LTALD62168*

### Cross References\*

8600126

7940

110800

110801

110802

1012118120

90014057

90014058

\*FOR REFERENCE PURPOSES ONLY

### Specifications

<b>Model</b>	36-SI
<b>Mount</b>	J-Type
<b>Performance Output</b>	12V; 170A
<b>Brush Type</b>	Brushless
<b>Ground Polarity</b>	Negative



### Application Inquiries

\*Call **(630) 202-4660** or write to  
**info@lotusautomotiveinc.com**  
for any application queries



## Applications

Model	Year	Engine
9300	1988-1999	14.0 Liter L6 - 855 CID (2275 Engine)
	1988-2000	14.6 Liter L6 - 893 CID (3406)
9370	1985-1987	9.0 Liter V6 - 552 CID (9300 Engine)
	1986-1987	10.0 Liter L6 - 611 CID (2375 S Engine)
	1985-1985	12.1 Liter V8 - 736 CID (9300 Engine)
	1985-1987	14.0 Liter L6 - 855 CID (2275 Engine)
9400	1986-1987	14.6 Liter L6 - 893 CID (3406)
	1990-1994	Liter CC - 629 CID (2574 Engine)
	1990-1994	10.0 Liter L6 - 611 CID (2375 S Engine)
	1995-2000	10.8 Liter L6 - 661 CID (2574 Engine)
	1992-2000	11.1 Liter L6 - 677 CID (8100 Engine)
9400i SBA	1992-2000	12.7 Liter L6 - 774 CID (8100 Engine)
	1990-2000	14.0 Liter L6 - 855 CID (2275 Engine)
	1990-2000	14.6 Liter L6 - 893 CID (3406)
	2000-2003	Liter CC - 732 CID (2574 Engine)
	2000-2002	Liter CC - 915 CID (5500i Engine)
	2000-2000	8.5 Liter L4 - 519 CID (3000 Engine)
	2000-2003	10.8 Liter L6 - 661 CID (2574 Engine)
	2000-2000	11.1 Liter L6 - 677 CID (8100 Engine)
	2000-2003	12.7 Liter L6 - 774 CID (8100 Engine)
	2000-2002	14.0 Liter L6 - 855 CID (2275 Engine)
	2000-2003	14.6 Liter L6 - 893 CID (3406)
	2003-2003	14.9 Liter L6 - 912 CID (9200i SBA Engine)
	9600	1989-1994
1994-1996		7.6 Liter L6 - 466 CID (2155 Engine)
1992-1996		11.1 Liter L6 - 677 CID (8100 Engine)
1995-1996		7.6 Liter L6 - 466 CID (2155 Engine)
9700	1989-1996	14.0 Liter L6 - 855 CID (2275 Engine)
	1989-1994	10.0 Liter L6 - 611 CID (2375 S Engine)
	1992-1996	10.8 Liter L6 - 661 CID (2574 Engine)
	1992-1996	11.1 Liter L6 - 677 CID (8100 Engine)
	1995-1996	12.7 Liter L6 - 774 CID (8100 Engine)
9800 SBA	1989-1996	14.0 Liter L6 - 855 CID (2275 Engine)
	1996-1999	10.8 Liter L6 - 661 CID (2574 Engine)



## Part # *LTALD72168*

### Cross References\*

*8600127*

*8614N*

*8600203*

*8600367*

*8700047*

*1012118390*

*8613*

*1012118410*

\*FOR REFERENCE PURPOSES ONLY

### Specifications

<b>Model</b>	36-SI
<b>Mount</b>	Pad-Type
<b>Performance Output</b>	12V; 170A
<b>Brush Type</b>	Brushless
<b>Ground Polarity</b>	Negative



### Application Inquiries

\*Call **(630) 202-4660** or write to  
**[info@lotusautomotiveinc.com](mailto:info@lotusautomotiveinc.com)**  
for any application queries



## Applications

Model	Year	Engine
3000RE	2015-2020	7.6 Liter L6 - 466 CID
3200	2008-2011	6.0 Liter V8 - 365 CID
	2008-2011	6.4 Liter V8 - 389 CID
	2008-2011	7.6 Liter L6 - 466 CID
3300	2008-2011	6.0 Liter V8 - 365 CID
	2015-2019	7.6 Liter L6 - 466 CID
4100	2006-2012	6.0 Liter V8 - 365 CID
	2008-2011	6.4 Liter V8 - 389 CID
4100 SBA	2006-2008	6.0 Liter V8 - 365 CID
4200	2004-2010	6.0 Liter V8 - 365 CID
4200 LP	2004-2008	6.0 Liter V8 - 365 CID
4300	2008-2016	6.4 Liter V8 - 389 CID
	2014-2019	6.7 Liter L6 - 408 CID
	2004-2018	7.6 Liter L6 - 466 CID
4300 LP	2008-2015	6.4 Liter V8 - 389 CID
	2016-2019	6.7 Liter L6 - 408 CID
	2004-2016	7.6 Liter L6 - 466 CID
4400	2004-2016	7.6 Liter L6 - 466 CID
	2017-2020	8.9 Liter L6 - 540 CID
	2007-2019	9.3 Liter L6 - 570 CID
4400 LP	2004-2016	7.6 Liter L6 - 466 CID
	2019	8.9 Liter L6 - 540 CID
	2008-2018	9.3 Liter L6 - 570 CID
4700	2018-2020	6.7 Liter L6 - 408 CID
	2004	7.6 Liter L6 - 466 CID
4900	2004-2005	7.6 Liter L6 - 466 CID
5500i	2004-2005	8.7 Liter L6 - 530 CID
	2007-2011	8.9 Liter L6 - 540 CID
	2012-2014	10.5 Liter L6 - 641 CID
	2004-2012	10.8 Liter L6 - 661 CID
5600i	2003	7.6 Liter L6 - 466 CID
	2004-2005	8.7 Liter L6 - 530 CID
	2007-2011	8.9 Liter L6 - 540 CID
	2012-2014	10.5 Liter L6 - 641 CID

Part # **LTALD72168**

Cross References\*

**8600127**

**8614N**

**8600203**

**8600367**

**8700047**

**1012118390**

**8613**

**1012118410**

\*FOR REFERENCE PURPOSES ONLY

Specifications

<b>Model</b>	36-SI
<b>Mount</b>	Pad-Type
<b>Performance Output</b>	12V; 170A
<b>Brush Type</b>	Brushless
<b>Ground Polarity</b>	Negative



**Application Inquiries**

\*Call **(630) 202-4660** or write to  
**info@lotusautomotiveinc.com**  
for any application queries



***Applications***

<b>Model</b>	<b>Year</b>	<b>Engine</b>	
5600i	2004-2012	10.8 Liter L6 - 661 CID	
	2004	14.6 Liter L6 - 893 CID	
	2004-2011	14.9 Liter L6 - 912 CID	
	2005-2008	15.2 Liter L6 - 928 CID	
	2006-2007	677 CID	
	2004	732 CID	
	2005-2009	763 CID	
5900i	2004-2011	10.8 Liter L6 - 661 CID	
	2015-2017	12.4 Liter L6 - 758 CID	
	2012-2017	14.9 Liter L6 - 912 CID	
7100-7700 Series	2003-2007	7.6 Liter L6 - 466 CID	
	2003-2007	8.7 Liter L6 - 530 CID	
	2003-2007	9.3 Liter L6 - 570 CID	
	2003-2009	10.8 Liter L6 - 661 CID	
	2005-2007	11.1 Liter L6 - 677 CID	
	2005-2007	12.5 Liter L6 - 763 CID	
	2003-2007	15.0 Liter L6 - 915 CID	
	2005-2007	15.2 Liter L6 - 928 CID	
	7300	2016-2019	6.7 Liter L6 - 408 CID
		2004-2017	7.6 Liter L6 - 466 CID
7300	2004-2016	7.6 Liter L6 - 466 CID	
	2004-2018	8.7 Liter L6 - 530 CID	
	2017-2020	8.9 Liter L6 - 540 CID	
	2005-2019	9.3 Liter L6 - 570 CID	
	7500	2008-2011	7.6 Liter L6 - 466 CID
2003-2005		8.7 Liter L6 - 530 CID	
2017-2020		8.9 Liter L6 - 540 CID	
7500	2004-2019	9.3 Liter L6 - 570 CID	
	7600	2007	9.3 Liter L6 - 570 CID
2003		10.3 Liter L6 - 629 CID	
2004-2007		10.8 Liter L6 - 661 CID	
7600	2009-2017	12.4 Liter L6 - 758 CID	
	7700	2005-2007	10.8 Liter L6 - 661 CID
2005-2007		763 CID	

Part # **LTALD72168**

Cross References\*

8600127

8614N

8600203

8600367

8700047

1012118390

8613

1012118410

\*FOR REFERENCE PURPOSES ONLY

Specifications

<b>Model</b>	36-SI
<b>Mount</b>	Pad-Type
<b>Performance Output</b>	12V; 170A
<b>Brush Type</b>	Brushless
<b>Ground Polarity</b>	Negative

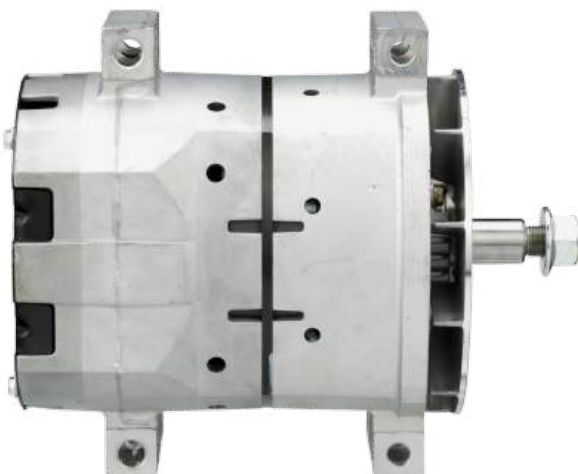


**Application Inquiries**

\*Call **(630) 202-4660** or write to  
**info@lotusautomotiveinc.com**  
for any application queries

***Applications***

Model	Year	Engine
8100-8600 Series	2003-2007	7.6 Liter L6 - 466 CID
	2003-2007	8.7 Liter L6 - 530 CID
	2004-2011	9.3 Liter L6 - 570 CID
	2001-2007	10.8 Liter L6 - 661 CID
	2003-2005	12.0 Liter L6 - 732 CID
	2005-2007	12.5 Liter L6 - 763 CID
8500	2004-2005	8.7 Liter L6 - 530 CID
	2004-2007	9.3 Liter L6 - 570 CID
8500 TranStar	2008-2011	9.3 Liter L6 - 570 CID
	2008-2011	10.8 Liter L6 - 661 CID
8600 SBA	2004-2007	9.3 Liter L6 - 570 CID
	2004	10.3 Liter L6 - 629 CID
	2004-2007	10.8 Liter L6 - 661 CID
	2005-2007	677 CID
	2004-2005	732 CID
	2004-2007	763 CID
8600 TransStar	2014-2015	8.9 Liter L6 - 540 CID
	2009-2014	10.5 Liter L6 - 641 CID
	2008-2011	10.8 Liter L6 - 661 CID
	2008-2018	12.4 Liter L6 - 758 CID
	2008-2010	Liter CC - 763 CID
9100-9900 Series	2001-2007	10.8 Liter L6 - 661 CID
	2005-2007	11.1 Liter L6 - 677 CID
	2005-2007	12.5 Liter L6 - 763 CID
	1999-2003	12.7 Liter L6 - 774 CID
	2001-2007	15.0 Liter L6 - 915 CID
	2000-2007	15.2 Liter L6 - 928 CID
	2000-2003	15.8 Liter L6 - 964 CID
	9100i SBA	2000-2000
	2001-2003	12.7 Liter L6 - 774 CID
9200i SBA	2004-2011	10.8 Liter L6 - 661 CID
	2000-2000	11.1 Liter L6 - 677 CID
	2000-2003	12.7 Liter L6 - 774 CID
	2004-2008	14.9 Liter L6 - 912 CID



Part # **LTALD72168**

Cross References\*

8600127

8614N

8600203

8600367

8700047

1012118390

8613

1012118410

\*FOR REFERENCE PURPOSES ONLY

Specifications

<b>Model</b>	36-SI
<b>Mount</b>	Pad-Type
<b>Performance Output</b>	12V; 170A
<b>Brush Type</b>	Brushless
<b>Ground Polarity</b>	Negative



**Application Inquiries**

\*Call **(630) 202-4660** or write to  
**info@lotusautomotiveinc.com**  
for any application queries

**Applications**

Model	Year	Engine
9200i SBA	2004-2004	732 CID
	2004-2011	763 CID
9400i SBA	2004-2004	915 CID
	2004-2011	10.8 Liter L6 - 661 CID
	2004-2009	14.6 Liter L6 - 893 CID
	2004-2007	14.9 Liter L6 - 912 CID
	2004-2007	15.2 Liter L6 - 928 CID
	2004-2004	732 CID
9900	2004-2007	763 CID
	2008-2014	15.0 Liter L6 - 915 CID
9900i	2000-2003	12.7 Liter L6 - 774 CID
	2004-2004	14.6 Liter L6 - 893 CID
	2003-2018	14.9 Liter L6 - 912 CID
	2004-2010	15.2 Liter L6 - 928 CID
	2004-2009	763 CID
9900i SFA	2000-2000	11.1 Liter L6 - 677 CID
	2001-2003	12.7 Liter L6 - 774 CID
9900ix	2000-2002	12.7 Liter L6 - 774 CID
	2004-2004	12.7 Liter L6 - 774 CID
	2004-2009	14.9 Liter L6 - 912 CID
	2004-2008	15.2 Liter L6 - 928 CID
	2006-2006	Liter CC - 763 CID
CF500	2005-2009	4.5 Liter V6 - 275 CID
CF600	2005-2009	4.5 Liter V6 - 275 CID
CXT	2006-2008	6.0 Liter V8 - 365 CID
	2005-2008	7.6 Liter L6 - 466 CID
	2006-2008	9.3 Liter L6 - 570 CID
DuraStar	2008-2014	6.4 Liter V8 - 389 CID
	2015-2015	6.7 Liter L6 - 409 CID
	2014-2014	6.7 Liter L6 - 408 CID
	2008-2015	7.6 Liter L6 - 466 CID
	2008-2015	9.3 Liter L6 - 570 CID
	2008-2014	12.4 Liter L6 - 758 CID
	2015-2017	Liter - CID L6



Part # **LTALD72168**

Cross References\*

8600127

8614N

8600203

8600367

8700047

1012118390

8613

1012118410

\*FOR REFERENCE PURPOSES ONLY

Specifications

<b>Model</b>	36-SI
<b>Mount</b>	Pad-Type
<b>Performance Output</b>	12V; 170A
<b>Brush Type</b>	Brushless
<b>Ground Polarity</b>	Negative



**Application Inquiries**

\*Call **(630) 202-4660** or write to  
**info@lotusautomotiveinc.com**  
for any application queries



***Applications***

Model	Year	Engine
DuraStar	2013-2020	7.6 Liter L6 - 466 CID
	2015-2016	Liter - CID V8
	2020-2020	9.3 Liter L6 - 570 CID
HV	2020-2024	8.9 Liter L6 - 540 CID
	2023-2024	10.8 Liter L6 - 661 CID
HV507	2019-2025	6.7 Liter L6 - 408 CID
	2019-2025	Liter CC - 549 CID
HV607	2019-2025	6.7 Liter L6 - 408 CID
	2019-2025	Liter CC - 549 CID
HX515	2017-2019	12.4 Liter L6 - 758 CID
HX520	2018-2025	14.9 Liter L6 - 912 CID
HX615	2017-2019	12.4 Liter L6 - 758 CID
HX620	2017-2025	14.9 Liter L6 - 912 CID
LT	2020-2024	14.9 Liter L6 - 912 CID
LT625	2017-2025	14.9 Liter L6 - 912 CID
LoneStar	2010-2011	10.8 Liter L6 - 661 CID
	2012-2015	12.4 Liter L6 - 758 CID
	2009-2024	14.9 Liter L6 - 912 CID
	2010-2015	15.0 Liter L6 - 915 CID
	2010-2010	15.2 Liter L6 - 928 CID
	2009-2019	Liter CC - 915 CID
MV	2020-2024	6.7 Liter L6 - 408 CID
	2020-2023	8.9 Liter L6 - 540 CID
MV607	2019-2025	6.7 Liter L6 - 408 CID
	2019-2025	Liter CC - 549 CID
MXT	2007-2009	6.0 Liter V8 - 365 CID
PayStar	2013-2015	12.4 Liter L6 - 758 CID
	2008-2015	15.0 Liter L6 - 915 CID
	2011-2012	15.2 Liter L6 - 928 CID
ProStar	2015-2017	Unspecified Engine
	2010-2014	10.5 Liter L6 - 641 CID
	2009-2010	10.8 Liter L6 - 661 CID
	2008-2019	12.4 Liter L6 - 758 CID
	2008-2020	14.9 Liter L6 - 912 CID

Part # **LTALD72168**

Cross References\*

8600127

8614N

8600203

8600367

8700047

1012118390

8613

1012118410

\*FOR REFERENCE PURPOSES ONLY

Specifications

<b>Model</b>	36-SI
<b>Mount</b>	Pad-Type
<b>Performance Output</b>	12V; 170A
<b>Brush Type</b>	Brushless
<b>Ground Polarity</b>	Negative



\*Call **(630) 202-4660** or write to  
**info@lotusautomotiveinc.com**  
for any application queries



**Applications**

Model	Year	Engine
RE	2023-2023	8.9 Liter L6 - 540 CID
RXT	2005-2008	6.0 Liter V8 - 365 CID
	2006-2007	9.3 Liter L6 - 570 CID
TerraStar	2010-2018	6.4 Liter V8 - 389 CID
TranStar	2015-2018	Unspecified Engine
	2015-2019	10.8 Liter L6 - 661 CID
	2008-2012	10.5 Liter L6 - 641 CID
	2008-2015	12.4 Liter L6 - 758 CID
Traveler	2015-2017	7.6 Liter L6 - 466 CID
UrbanStar	2020-2020	Unspecified Engine
	2018-2018	Liter - CID L4
	2018-2020	Liter - CID L6
	2021-2022	8.9 Liter L6 - 540 CID
WorkStar	2008-2015	7.6 Liter L6 - 466 CID
	2015-2015	9.3 Liter L4 - 570 CID
	2008-2015	9.3 Liter L6 - 570 CID
	2008-2015	12.4 Liter L6 - 758 CID
	2015-2015	12.4 Liter L6 - 758 CID
WorkStar 7300	2015-2017	7.6 Liter L6 - 466 CID
	2020-2020	9.3 Liter L6 - 570 CID
WorkStar 7400	2015-2017	Liter - CID L6
WorkStar 7600	2016-2018	Unspecified Engine
	2009-2014	10.5 Liter L6 - 641 CID
	2008-2022	10.8 Liter L6 - 661 CID
	2009-2019	12.4 Liter L6 - 758 CID
WorkStar 7700	2008-2012	10.8 Liter L6 - 661 CID

## Part # *LTSMD8328*

### Cross References\*

8200308

6924N

FL0777

10461045

8200289

IN1478

8200290

8300019

PC1879

VV0977

VV0776

PC0979

\*FOR REFERENCE PURPOSES ONLY

### Specifications

<b>Model</b>	39-MT
<b>Pinion Teeth</b>	11
<b>Performance Output</b>	12V
<b>Pinion Pitch</b>	6/8
<b>Rotation</b>	Clockwise



### Application Inquiries

\*Call **(630) 202-4660** or write to  
**info@lotusautomotiveinc.com**  
for any application queries

## Applications

Model	Year	Engine
1954	1986-1986	9.0 Liter V6 - 552 CID
	1985-1987	10.0 Liter L6 - 611 CID
2275	1985-1987	14.0 Liter L6 - 855 CID
	1986-1988	14.6 Liter L6 - 893 CID
2275-S	1980-1989	9.0 Liter V6 - 552 CID
	1980-1989	14.0 Liter L6 - 855 CID
2276-S	1983-1989	9.0 Liter V6 - 552 CID
	1983-1989	14.0 Liter L6 - 855 CID
2300	1993-1996	8.7 Liter L6 - 530 CID
	1993-1996	10.0 Liter L10 - 611 CID
2375	1993-2000	14.0 Liter L6 - 855 CID
	1993-1996	8.7 Liter L6 - 530 CID
2375-S	1993-1996	10.0 Liter L10 - 611 CID
	1993-2000	14.0 Liter L6 - 855 CID
2554	1983-1989	10.0 Liter L6 - 611 CID
	1999-2000	10.8 Liter L6 - 661 CID
2574	1999-2000	14.0 Liter L6 - 855 CID
	1980-1991	9.0 Liter V6 - 552 CID
2575	1984-1999	10.0 Liter L6 - 611 CID
	1989-2003	10.3 Liter L6 - 629 CID
2654	1994-2003	10.8 Liter L6 - 661 CID
	1980-2002	14.0 Liter L6 - 855 CID
2674	1991-1997	629 CID
	1997-2003	732 CID
2675	1980-1988	9.0 Liter V6 - 552 CID
	1993-2000	10.0 Liter L10 - 611 CID
2676	1984-1989	10.0 Liter L6 - 611 CID
	1997-2000	10.8 Liter L6 - 661 CID
2677	1997-2000	12.0 Liter L6 - 732 CID
	1980-2000	14.0 Liter L6 - 855 CID
2678	1999-2000	10.8 Liter L6 - 661 CID
	1999-1999	12.7 Liter L6 - 774 CID
2679	1999-2000	14.0 Liter L6 - 855 CID
	1980-1988	9.0 Liter V6 - 552 CID



## Part # *LTSMD8328*

### Cross References\*

8200308

6924N

FL0777

10461045

8200289

IN1478

8200290

8300019

PC1879

VV0977

VV0776

PC0979

\*FOR REFERENCE PURPOSES ONLY

### Specifications

<b>Model</b>	39-MT
<b>Pinion Teeth</b>	11
<b>Performance Output</b>	12V
<b>Pinion Pitch</b>	6/8
<b>Rotation</b>	Clockwise



### Application Inquiries

\*Call **(630) 202-4660** or write to  
**info@lotusautomotiveinc.com**  
for any application queries



## Applications

Model	Year	Engine
2674	1984-1999	10.0 Liter L6 - 611 CID
	1998-2003	10.3 Liter L6 - 629 CID
	1994-2003	10.8 Liter L6 - 661 CID
	1997-1998	11.1 Liter L6 - 677 CID
	1998-1998	12.7 Liter L6 - 774 CID
	1980-2002	14.0 Liter L6 - 855 CID
	1993-1993	14.6 Liter L6 - 893 CID
	1989-1987	629 CID
	1997-2003	732 CID
	2675	1987-1987
1987-1989		10.0 Liter L6 - 611 CID
3000	1987-1989	14.0 Liter L6 - 855 CID
	1999-2002	8.5 Liter L4 - 519 CID
3700	1992-1992	14.0 Liter L6 - 855 CID
	1990-1991	14.6 Liter L6 - 893 CID
3800	1997-1997	8.5 Liter L4 - 519 CID
	1991-1991	9.0 Liter V6 - 552 CID
	1990-1993	10.0 Liter L6 - 611 CID
	1992-1984	10.0 Liter L6 - 611 CID
	1992-1992	12.7 Liter L6 - 774 CID
	1990-1991	14.0 Liter L6 - 855 CID
	1990-1999	14.6 Liter L6 - 893 CID
	1997-2003	8.7 Liter L6 - 530 CID
	1997-1999	14.0 Liter L6 - 855 CID
	1997-1999	14.6 Liter L6 - 893 CID
4300	2002-2002	8.5 Liter L4 - 519 CID
4400	2002-2002	8.5 Liter L4 - 519 CID
4600	1990-1990	14.0 Liter L6 - 855 CID
4700	1998-2001	8.5 Liter L4 - 519 CID
	1990-1994	10.0 Liter L6 - 611 CID
	1994-2001	11.1 Liter L6 - 677 CID
	1996-1997	12.7 Liter L6 - 774 CID
	1990-1990	12.7 Liter L6 - 774 CID
	1991-1998	14.6 Liter L6 - 893 CID

Part # **LTSMD8328**

Cross References\*

- 8200308    6924N    FL0777
- 10461045    8200289    IN1478
- 8200290    8300019    PC1879
- VV0977    VV0776    PC0979

\*FOR REFERENCE PURPOSES ONLY

Specifications

<b>Model</b>	39-MT
<b>Pinion Teeth</b>	11
<b>Performance Output</b>	12V
<b>Pinion Pitch</b>	6/8
<b>Rotation</b>	Clockwise

 **Application Inquiries**

\*Call **(630) 202-4660** or write to  
**info@lotusautomotiveinc.com**  
for any application queries

***Applications***

Model	Year	Engine
4700LP	1994-1994	11.1 Liter L6 - 677 CID
	1996-2001	12.7 Liter L6 - 774 CID
4800	2001-2001	8.5 Liter L4 - 519 CID
4900	1994-2002	8.5 Liter L4 - 519 CID
	1991-1999	10.0 Liter L6 - 611 CID
	2000-2000	10.8 Liter L6 - 661 CID
	1992-1992	11.1 Liter L6 - 677 CID
	2001-2001	12.7 Liter L6 - 774 CID
	1990-1992	14.0 Liter L6 - 855 CID
	1990-2000	14.6 Liter L6 - 893 CID
	1992-1992	629 CID
	2001-2001	732 CID
5000	1990-1998	10.0 Liter L6 - 611 CID
	1998-2000	10.3 Liter L6 - 629 CID
	1994-2002	10.8 Liter L6 - 661 CID
	1990-1999	14.0 Liter L6 - 855 CID
	1999-1999	14.6 Liter L6 - 893 CID
	1994-1997	629 CID
	1998-1998	732 CID
5000-5900	1997-2003	8.7 Liter L6 - 530 CID
	1993-1999	10.0 Liter L10 - 610 CID
	1993-2003	10.3 Liter L6 - 629 CID
	1993-2007	10.8 Liter L6 - 661 CID
	1993-2003	12.0 Liter L6 - 732 CID
	2003-2007	12.5 Liter L6 - 763 CID
	1997-1999	14.0 Liter L6 - 855 CID
	1993-1999	14.6 Liter L6 - 893 CID
	2000-2007	15.0 Liter L6 - 915 CID
	2000-2007	15.2 Liter L6 - 928 CID
5070	1985-1988	15.2 Liter L6 - 928 CID
	1985-1998	10.0 Liter L6 - 611 CID
	1999-2000	10.3 Liter L6 - 629 CID
	1995-2000	10.8 Liter L6 - 661 CID
	1984-2000	14.0 Liter L6 - 855 CID



## Part # *LTSMD8328*

### Cross References\*

8200308

6924N

FL0777

10461045

8200289

IN1478

8200290

8300019

PC1879

VV0977

VV0776

PC0979

\*FOR REFERENCE PURPOSES ONLY

### Specifications

<i>Model</i>	39-MT
<i>Pinion Teeth</i>	11
<i>Performance Output</i>	12V
<i>Pinion Pitch</i>	6/8
<i>Rotation</i>	Clockwise



### Application Inquiries

\*Call **(630) 202-4660** or write to  
**[info@lotusautomotiveinc.com](mailto:info@lotusautomotiveinc.com)**  
for any application queries



## Applications

Model	Year	Engine
5070	1993-1999	14.6 Liter L6 - 893 CID
	1992-1995	629 CID
	1999-1999	732 CID
5500i	2007-2009	8.9 Liter L6 - 540 CID
	2000-2003	10.3 Liter L6 - 629 CID
	2000-2012	10.3 Liter L6 - 629 CID
	2000-2002	14.0 Liter L6 - 855 CID
	2000-2004	14.6 Liter L6 - 893 CID
	2004-2011	14.9 Liter L6 - 912 CID
	2006-2007	15.2 Liter L6 - 928 CID
	2007-2007	677 CID
5600i	2000-2004	732 CID
	2005-2008	763 CID
	2003-2011	915 CID
	2007-2009	8.9 Liter L6 - 540 CID
	2001-2004	10.3 Liter L6 - 629 CID
	2000-2012	10.8 Liter L6 - 661 CID
	2000-2002	14.0 Liter L6 - 855 CID
	2000-2004	14.6 Liter L6 - 893 CID
	2004-2011	14.9 Liter L6 - 912 CID
	2005-2008	14.9 Liter L6 - 912 CID
	2006-2007	677 CID
5900i	2000-2004	732 CID
	2005-2009	763 CID
	2003-2004	915 CID
	2000-2011	10.8 Liter L6 - 661 CID
7100-7700	2000-2002	14.0 Liter L6 - 855 CID
	2012-2017	14.9 Liter L6 - 912 CID
	2003-2004	10.3 Liter L6 - 629 CID
7100-7700	2003-2009	10.8 Liter L6 - 661 CID
	2005-2007	11.1 Liter L6 - 677 CID
	2003-2004	12.0 Liter L6 - 732 CID
	2005-2007	12.5 Liter L6 - 763 CID
	2003-2007	15.0 Liter L6 - 915 CID

## Part # *LTSMD8328*

### Cross References\*

8200308

6924N

FL0777

10461045

8200289

IN1478

8200290

8300019

PC1879

VV0977

VV0776

PC0979

\*FOR REFERENCE PURPOSES ONLY

### Specifications

**Model** 39-MT

**Pinion Teeth** 11

**Performance Output** 12V

**Pinion Pitch** 6/8

**Rotation** Clockwise



### Application Inquiries

\*Call **(630) 202-4660** or write to  
**info@lotusautomotiveinc.com**  
for any application queries



## Applications

Model	Year	Engine
7100-7700	2005-2007	15.2 Liter L6 - 928 CID
7400	2005-2005	10.8 Liter L6 - 661 CID
	2007-2007	677 CID
	2004-2004	732 CID
7600	2003-2004	10.3 Liter L6 - 629 CID
	2003-2007	10.8 Liter L6 - 661 CID
	2004-2007	677 CID
	2003-2004	732 CID
	2004-2007	763 CID
7700	2005-2007	10.8 Liter L6 - 661 CID
	2005-2005	677 CID
	2005-2007	763 CID
8100	1994-1998	8.5 Liter L4 - 519 CID
	1990-1999	10.0 Liter L6 - 611 CID
	1998-2003	10.3 Liter L6 - 629 CID
	1994-2003	10.8 Liter L6 - 661 CID
	1990-1996	11.1 Liter L6 - 677 CID
	1990-1996	12.7 Liter L6 - 774 CID
	1990-1999	14.0 Liter L6 - 855 CID
	1991-1991	14.6 Liter L6 - 893 CID
	1990-1997	629 CID
	1999-2001	732 CID
8100-8600 Series	1993-2003	10.3 Liter L6 - 629 CID
	1994-2007	10.8 Liter L6 - 661 CID
	2003-2005	12.0 Liter L6 - 732 CID
	2005-2007	12.5 Liter L6 - 763 CID
	1993-1999	14.6 Liter L6 - 893 CID
	1997-1997	8.5 Liter L4 - 519 CID
	1990-1997	10.0 Liter L6 - 611 CID
	1994-1997	10.8 Liter L6 - 661 CID
	1990-1997	11.1 Liter L6 - 677 CID
	1990-1996	12.7 Liter L6 - 774 CID
	1990-1997	14.0 Liter L6 - 855 CID
8300	1988-1994	10.0 Liter L6 - 611 CID

Part # **LTSMD8328**

Cross References\*

8200308 6924N FL0777  
10461045 8200289 IN1478  
8200290 8300019 PC1879  
VV0977 VV0776 PC0979

\*FOR REFERENCE PURPOSES ONLY

Specifications

**Model** 39-MT  
**Pinion Teeth** 11  
**Performance Output** 12V  
**Pinion Pitch** 6/8  
**Rotation** Clockwise

 **Application Inquiries**

\*Call **(630) 202-4660** or write to  
**info@lotusautomotiveinc.com**  
for any application queries

***Applications***

Model	Year	Engine	
8300	1990-1994	11.1 Liter L6 - 677 CID	
	1990-1994	12.7 Liter L6 - 774 CID	
	1988-1994	14.0 Liter L6 - 855 CID	
8500 TranStar	2008-2011	10.8 Liter L6 - 661 CID	
8600 SBA	2003-2004	10.3 Liter L6 - 629 CID	
	2003-2007	10.8 Liter L6 - 661 CID	
	2005-2007	677 CID	
	2003-2005	732 CID	
	2004-2007	763 CID	
	8600 TranStar	2008-2011	10.8 Liter L6 - 661 CID
	2008-2010	763 CID	
	9100 SBA	1998-1999	10.8 Liter L6 - 661 CID
		1998-1999	11.1 Liter L6 - 677 CID
1998-1999		14.0 Liter L6 - 855 CID	
9100 - 9900 Series	1993-1996	10.0 Liter L10 - 610 CID	
	1993-2003	10.3 Liter L6 - 629 CID	
	1993-2007	10.8 Liter L6 - 661 CID	
	2005-2007	11.1 Liter L6 - 677 CID	
	1997-2003	12.0 Liter L6 - 732 CID	
	2005-2007	12.5 Liter L6 - 763 CID	
	1992-2003	12.7 Liter L6 - 774 CID	
	1993-2003	14.0 Liter L6 - 855 CID	
	1993-2001	14.6 Liter L6 - 893 CID	
	1997-2007	15.0 Liter L6 - 915 CID	
9100i SBA	2000-2007	15.2 Liter L6 - 928 CID	
	1999-2003	15.8 Liter L6 - 964 CID	
	2000-2003	10.8 Liter L6 - 661 CID	
	2000-2000	11.1 Liter L6 - 677 CID	
	2001-2003	12.7 Liter L6 - 774 CID	
	2000-2002	14.0 Liter L6 - 855 CID	
9200 SBA	1993-1994	10.0 Liter L6 - 611 CID	
	1998-2000	10.3 Liter L6 - 629 CID	
	1994-2000	10.8 Liter L6 - 661 CID	
	1994-2000	11.1 Liter L6 - 677 CID	



## Part # *LTSMD8328*

### Cross References\*

8200308

6924N

FL0777

10461045

8200289

IN1478

8200290

8300019

PC1879

VV0977

VV0776

PC0979

\*FOR REFERENCE PURPOSES ONLY

### Specifications

<b>Model</b>	39-MT
<b>Pinion Teeth</b>	11
<b>Performance Output</b>	12V
<b>Pinion Pitch</b>	6/8
<b>Rotation</b>	Clockwise



### Application Inquiries

\*Call **(630) 202-4660** or write to  
**info@lotusautomotiveinc.com**  
for any application queries



## Applications

Model	Year	Engine
9200 SBA	1994-2000	12.7 Liter L6 - 774 CID
	1994-2000	14.0 Liter L6 - 855 CID
	1996-1996	14.6 Liter L6 - 893 CID
	1993-1997	629 CID
	1997-2000	732 CID
	1999-1999	915 CID
	9200i SBA	2000-2003
2000-2011		10.8 Liter L6 - 661 CID
2000-2000		11.1 Liter L6 - 677 CID
2000-2003		12.7 Liter L6 - 774 CID
2000-2002		14.0 Liter L6 - 855 CID
2002-2004		14.6 Liter L6 - 893 CID
2003-2008		14.9 Liter L6 - 912 CID
2000-2004		732 CID
2004-2011		763 CID
2000-2004		915 CID
9300	1988-1988	9.0 Liter V6 - 552 CID
	1988-1994	10.0 Liter L6 - 611 CID
	1994-1999	10.8 Liter L6 - 661 CID
	1992-1998	10.0 Liter L6 - 611 CID (2375 S Engine)
	1988-1988	12.1 Liter V8 - 736 CID
	1992-1999	12.7 Liter L6 - 774 CID
	1988-1999	14.0 Liter L6 - 855 CID
	1988-2000	14.6 Liter L6 - 893 CID
	1988-1997	629 CID
	1999-1999	915 CID
	9370	1985-1987
1986-1987		10.0 Liter L6 - 611 CID
1985-1985		12.1 Liter V8 - 736 CID
1985-1987		14.0 Liter L6 - 855 CID
1986-1987		14.6 Liter L6 - 893 CID
9400	1990-1994	10.0 Liter L6 - 611 CID
	1995-2000	10.8 Liter L6 - 661 CID
	1992-2000	11.1 Liter L6 - 677 CID

## Part # *LTSMD8328*

### Cross References\*

8200308

6924N

FL0777

10461045

8200289

IN1478

8200290

8300019

PC1879

VV0977

VV0776

PC0979

\*FOR REFERENCE PURPOSES ONLY

### Specifications

<b>Model</b>	39-MT
<b>Pinion Teeth</b>	11
<b>Performance Output</b>	12V
<b>Pinion Pitch</b>	6/8
<b>Rotation</b>	Clockwise



### Application Inquiries

\*Call **(630) 202-4660** or write to  
**info@lotusautomotiveinc.com**  
for any application queries



## Applications

Model	Year	Engine	
9400	1992-2000	12.7 Liter L6 - 774 CID	
	1990-2000	14.0 Liter L6 - 855 CID	
	1990-2000	14.6 Liter L6 - 893 CID	
	1990-1994	629 CID	
	9400i SBA	2000-2000	8.5 Liter L4 - 519 CID
		2000-2011	10.8 Liter L6 - 661 CID
		2000-2000	11.1 Liter L6 - 677 CID
		2000-2003	12.7 Liter L6 - 774 CID
		2002-2002	14.0 Liter L6 - 855 CID
		2000-2009	14.6 Liter L6 - 893 CID
9600	2003-2007	14.9 Liter L6 - 912 CID	
	2004-2007	15.2 Liter L6 - 928 CID	
	2000-2004	732 CID	
	2004-2007	763 CID	
	2002-2002	915 CID	
	9600	1989-1994	10.0 Liter L6 - 611 CID
		1994-1996	10.8 Liter L6 - 661 CID
		1992-1996	11.1 Liter L6 - 677 CID
		1995-1996	12.7 Liter L6 - 774 CID
		1989-1996	14.0 Liter L6 - 855 CID
9700	1989-1994	10.0 Liter L6 - 611 CID	
	1994-1996	10.8 Liter L6 - 661 CID	
	1992-1996	11.1 Liter L6 - 677 CID	
	1995-1996	12.7 Liter L6 - 774 CID	
	1989-1996	14.0 Liter L6 - 855 CID	
	9800 SBA	1996-1999	10.8 Liter L6 - 661 CID
1996-1999		11.1 Liter L6 - 677 CID	
1996-1996		12.7 Liter L6 - 774 CID	
1996-1999		14.0 Liter L6 - 855 CID	
9900	1999-2000	10.8 Liter L6 - 661 CID	
	1999-2000	12.7 Liter L6 - 774 CID	
	1999-2000	14.0 Liter L6 - 855 CID	
	1999-2000	14.6 Liter L6 - 893 CID	
	1999-2000	732 CID	

## Part # *LTSMD8328*

### Cross References\*

8200308

6924N

FL0777

10461045

8200289

IN1478

8200290

8300019

PC1879

VV0977

VV0776

PC0979

\* FOR REFERENCE PURPOSES ONLY

### Specifications

<b>Model</b>	39-MT
<b>Pinion Teeth</b>	11
<b>Performance Output</b>	12V
<b>Pinion Pitch</b>	6/8
<b>Rotation</b>	Clockwise



### Application Inquiries

\*Call **(630) 202-4660** or write to  
**info@lotusautomotiveinc.com**  
for any application queries



## Applications

Model	Year	Engine
9900 SFA	1999-1999	10.8 Liter L6 - 661 CID
	1999-1999	11.1 Liter L6 - 677 CID
	1999-1999	14.0 Liter L6 - 855 CID
9900i	2000-2003	10.8 Liter L6 - 661 CID
	2000-2003	12.7 Liter L6 - 774 CID
	2000-2002	14.0 Liter L6 - 855 CID
	2000-2004	14.6 Liter L6 - 893 CID
	2003-2018	14.9 Liter L6 - 912 CID
	2004-2013	15.2 Liter L6 - 928 CID
	2000-2004	732 CID
9900i SFA	2004-2009	763 CID
	2000-2011	915 CID
	2000-2003	10.8 Liter L6 - 661 CID
	2000-2000	11.1 Liter L6 - 677 CID
	2001-2003	12.7 Liter L6 - 774 CID
	2000-2002	14.0 Liter L6 - 855 CID
	2000-2002	14.0 Liter L6 - 855 CID
9900ix	2000-2002	12.7 Liter L6 - 774 CID
	2000-2002	14.0 Liter L6 - 855 CID
	2000-2004	14.6 Liter L6 - 893 CID
	2004-2009	14.9 Liter L6 - 912 CID
	2004-2008	15.2 Liter L6 - 928 CID
	2000-2000	732 CID
	2006-2006	763 CID
9900ix SFA	2000-2009	915 CID
	2001-2002	10.8 Liter L6 - 661 CID
	2001-2002	12.7 Liter L6 - 774 CID
	2001-2002	14.0 Liter L6 - 855 CID
CO9670	2003-2003	14.6 Liter L6 - 893 CID
	1981-1988	9.0 Liter V6 - 552 CID
	1986-1988	10.0 Liter L6 - 611 CID
COF5870 Paystar	1982-1986	12.1 Liter V8 - 736 CID
	1982-1988	14.0 Liter L6 - 855 CID
	1985-1985	9.0 Liter V6 - 552 CID
	1987-1988	14.0 Liter L6 - 855 CID

## Part # *LTSMD8328*

### Cross References\*

8200308

6924N

FL0777

10461045

8200289

IN1478

8200290

8300019

PC1879

VV0977

VV0776

PC0979

\*FOR REFERENCE PURPOSES ONLY

### Specifications

<b>Model</b>	39-MT
<b>Pinion Teeth</b>	11
<b>Performance Output</b>	12V
<b>Pinion Pitch</b>	6/8
<b>Rotation</b>	Clockwise



### Application Inquiries

\*Call **(630) 202-4660** or write to  
**info@lotusautomotiveinc.com**  
for any application queries

## Applications

Model	Year	Engine	
COF9670	1981-1988	9.0 Liter V6 - 552 CID	
	1986-1988	10.0 Liter L6 - 611 CID	
	1982-1988	12.1 Liter V8 - 736 CID	
F1954	1982-1988	14.0 Liter L6 - 855 CID	
	1988-1988	9.0 Liter V6 - 552 CID	
	1984-1985	14.0 Liter L6 - 855 CID	
F2275	1989-1989	14.6 Liter L6 - 893 CID	
	1980-1989	9.0 Liter V6 - 552 CID	
	1980-1989	14.0 Liter L6 - 855 CID	
F2276-S	1983-1989	9.0 Liter V6 - 552 CID	
	1983-1989	14.0 Liter L6 - 855 CID	
	1983-1989	10.0 Liter L6 - 611 CID	
F2375-S	1983-1989	10.0 Liter L6 - 611 CID	
	F2574	1980-1989	9.0 Liter V6 - 552 CID
		1984-1989	10.0 Liter L6 - 611 CID
1980-1989		14.0 Liter L6 - 855 CID	
F2575	1980-1989	9.0 Liter V6 - 552 CID	
	1984-1989	10.0 Liter L6 - 611 CID	
	1982-1989	14.0 Liter L6 - 855 CID	
F2674	1980-1989	9.0 Liter V6 - 552 CID	
	1984-1989	10.0 Liter L6 - 611 CID	
	1980-1989	14.0 Liter L6 - 855 CID	
F2675	1987-1989	10.0 Liter L6 - 611 CID	
	1987-1989	14.0 Liter L6 - 855 CID	
	F5070	1995-1995	8.5 Liter L4 - 519 CID
1984-1984		9.0 Liter V6 - 552 CID	
1984-1998		10.0 Liter L6 - 611 CID	
F5070-RHD	1998-2000	10.3 Liter L6 - 629 CID	
	1995-2000	10.8 Liter L6 - 661 CID	
	1984-1988	12.1 Liter V8 - 736 CID	
F5070-SF/WW	1984-2000	14.0 Liter L6 - 855 CID	
	1988-2000	14.6 Liter L6 - 893 CID	
	1984-1984	14.0 Liter L6 - 855 CID	
F5070-SF/WW	1986-1986	9.0 Liter V6 - 552 CID	
	1986-1986	10.0 Liter L6 - 611 CID	



## Part # *LTSMD8328*

### Cross References\*

8200308

6924N

FL0777

10461045

8200289

IN1478

8200290

8300019

PC1879

VV0977

VV0776

PC0979

\*FOR REFERENCE PURPOSES ONLY

### Specifications

<b>Model</b>	39-MT
<b>Pinion Teeth</b>	11
<b>Performance Output</b>	12V
<b>Pinion Pitch</b>	6/8
<b>Rotation</b>	Clockwise



### Application Inquiries

\*Call **(630) 202-4660** or write to  
**info@lotusautomotiveinc.com**  
for any application queries



## Applications

Model	Year	Engine	
F5070-SF	1984-1987	9.0 Liter V6 - 552 CID	
	1984-1987	10.0 Liter L6 - 611 CID	
	1984-1987	12.1 Liter V8 - 736 CID	
F5070-WW	1984-1987	14.0 Liter L6 - 855 CID	
	1988-1988	9.0 Liter V6 - 552 CID	
	1987-1994	10.0 Liter L6 - 611 CID	
F9370	1993-1993	12.7 Liter L6 - 774 CID	
	1993-1993	14.0 Liter L6 - 855 CID	
	1985-1987	9.0 Liter V6 - 552 CID	
HX520	1986-1987	10.0 Liter L6 - 611 CID	
	1985-1987	12.1 Liter V8 - 736 CID	
	1984-1987	14.0 Liter L6 - 855 CID	
HX620	1985-1987	14.6 Liter L6 - 893 CID	
	2018-2021	14.9 Liter L6 - 912 CID	
	2017-2025	14.9 Liter L6 - 912 CID	
LT625	2017-2025	14.9 Liter L6 - 912 CID	
	LoneStar	2010-2011	10.8 Liter L6 - 661 CID
	2009-2021	14.9 Liter L6 - 912 CID	
PayStar	2010-2010	15.2 Liter L6 - 928 CID	
	2009-2011	915 CID	
	2008-2015	15.0 Liter L6 - 915 CID	
ProStar	2011-2012	15.2 Liter L6 - 928 CID	
	2009-2010	10.8 Liter L6 - 661 CID	
	2008-2020	14.9 Liter L6 - 912 CID	
TranStar	2007-2007	15.0 Liter L6 - 915 CID	
	2009-2014	15.2 Liter L6 - 928 CID	
	2015-2019	10.8 Liter L6 - 661 CID	
WorkStar	2015-2015	15.0 Liter L6 - 915 CID	
	WorkStar 7600	2008-2022	10.8 Liter L6 - 661 CID
	2008-2011	763 CID	
WorkStar 7700	2008-2012	10.8 Liter L6 - 661 CID	
	2008-2009	763 CID	



### Replacement Parts For

Peterbilt

International

Volvo

Mack

Isuzu

Western Star

Motor Coach

Blue Bird

Autocar

Kalmar Ottawa

Capacity

TICO

Mol Cy

Terberg

Freightliner

Kenworth




Application Inquiries?

Give us a call on (630) 202-4660




 **Corporate HQ**

5600 N River Rd #800, Suite 826, Rosemont, IL 60018

 **Warehousing**

500 Country Club Dr, Bensenville, IL 60106

 [info@lotusautomotiveinc.com](mailto:info@lotusautomotiveinc.com)

 (630) 202-4660